


ColorBright™

RGB 150 LED Strip Light

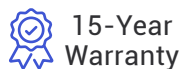
Product Data Sheet

 Please read all instructions carefully before installation.

Description

ColorBright™ RGB 150 LED Strip Lights are perfect for applications that require full control over colors, with enough brightness to accentuate different areas or objects in your setting. This LED strip light offers rich colors, intricate customization, easy installations, and more.

With 150 color-changing LED chips over a 5-meter reel, this LED strip creates beautiful colors with enough brightness to accentuate different areas or objects in your setting. Its high-quality 5050 chip combines red, green and blue lights to create any color combination you could think of, offering a wide range of creative options when paired with an RGB controller.



15-Year
Warranty



Product Features

Voltage	24V DC Input
LEDs/ft	9 LEDs/ft (30/meter)
Beam Angle	120° Beam Angle
Ambient Temp	-4°F to +113°F (-20°C to 45°C)
Strip Width	3/8" (10 mm)
LED Pitch	1/4" (33 mm)
Cutting Points	6 1/2" (165 mm)
Max Run Length in Series	49' 2" (15 m)
PCB	4 oz copper
LED Size	5050
Adhesive Type	3M VHB 4930 tape (IP20)
Dimmable	Yes
Spool Size	16.4 ft (5 m), 98.4 ft (30 m)

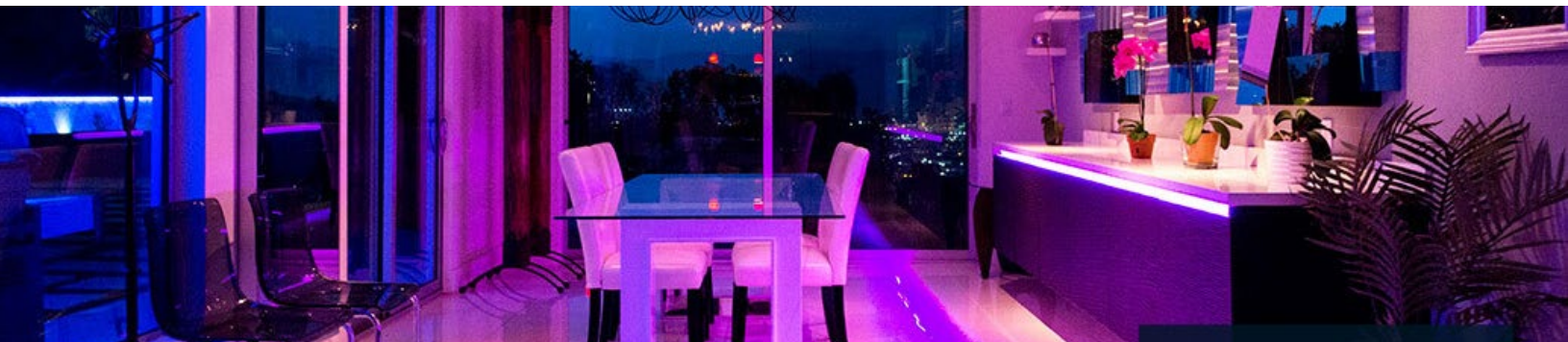
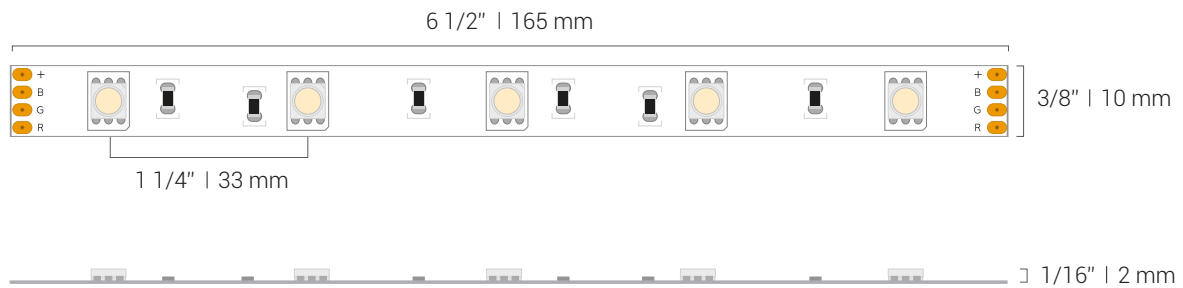
Product Specifications

Product SKU	Watts / Foot (Meter)	Lumen / Foot (Meter)	Color Wavelength	Segment Lengths	Max Run Length in Series
CB-RGB150	2.2 W/ft (7.2 W/m)	66 lm/ft (216 lm/m)	R: 617-627 nm G: 515-525 nm B: 464-474 nm	6 1/2" (165 mm)	49 ft (15 m)

Ordering Code

Brand	Series	Voltage	Length
CB ColorBright™	RGB150	24V	16FT - 16ft Reel 98FT - 98ft Reel

Dimensions

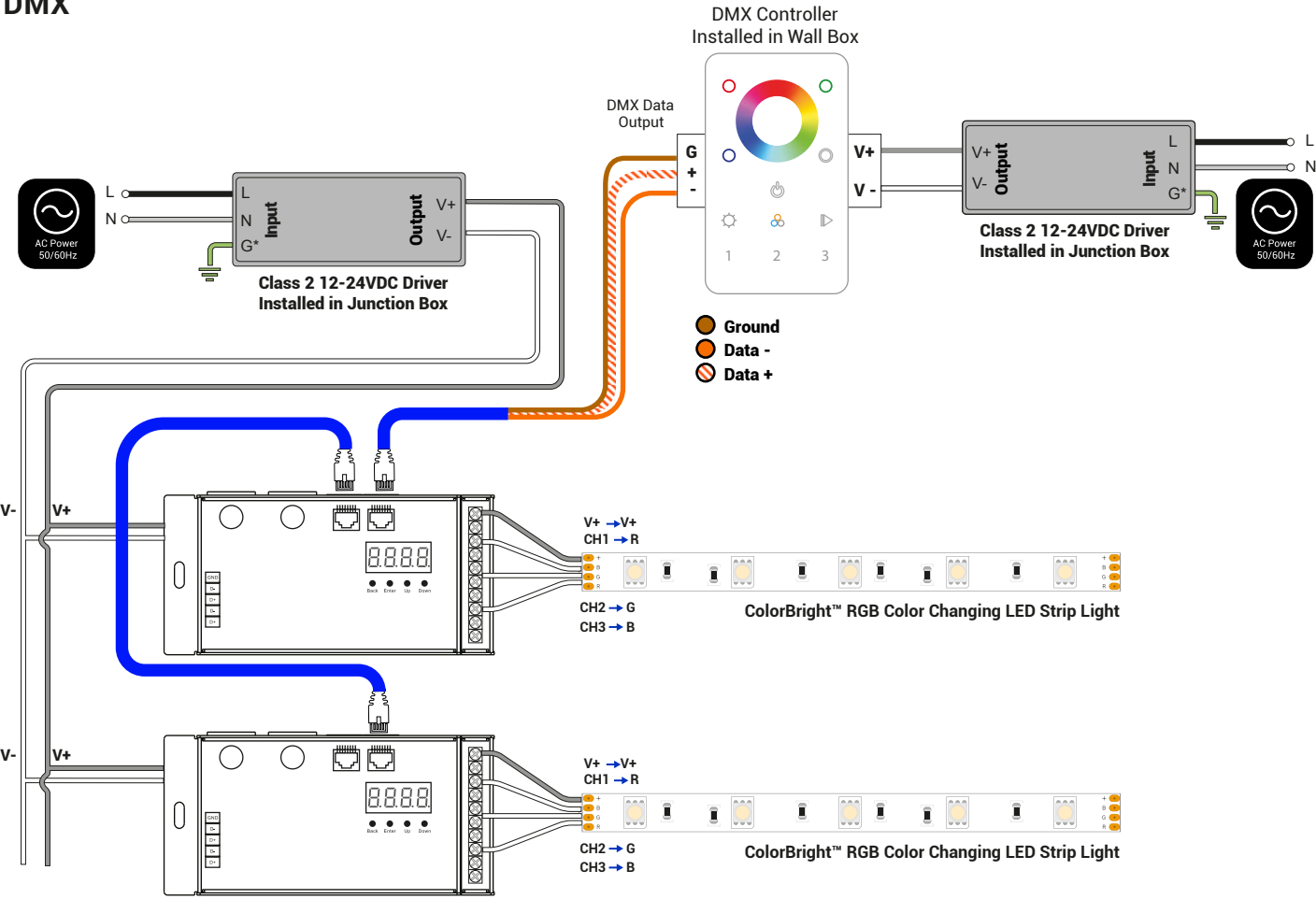


Dimming Options

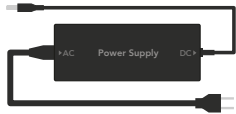


PWM Dimming



DMX



Compatible Drivers

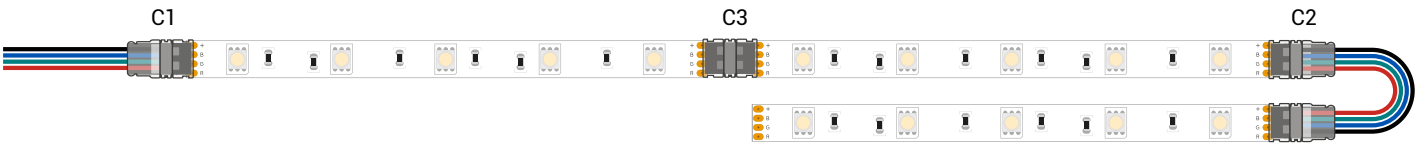
Power Supply	LED Strip Length	Watts	Product SKU	Class 2	Diagram
Plug-In Power Supply	2 - 8 ft	24 W	24V-WMPS-1	X	
	9 - 21 ft	60 W	24V-DPS-2.5	X	
	22 - 34 ft	96 W	24V-DPS2-4	X	
	35 - 43 ft	120 W	24V-DPS2-5	X	
Mean Well™ HLG	2 - 16 ft	40 W	HLG-40H-24A	X	
	17 - 24 ft	60 W	HLG-60H-24A	X	
	25 - 39 ft	96 W	HLG-100H-24A	X	
	40 - 49 ft	120 W	HLG-120H-24A	X	
	50 - 75 ft	185 W	HLG-185H-24A	X	
	76 - 98 ft	240 W	HLG-240H-24A	X	
	99 - 130 ft	320 W	HLG-320H-24A	X	
131 - 245 ft	600 W	HLG-600H-24A	X		
Mean Well™ LPV	1 - 7 ft	20 W	LPV-20-24	X	
	8 - 13 ft	35 W	LPV-35-24	X	
	14 - 23 ft	60 W	LPV-60-24	X	



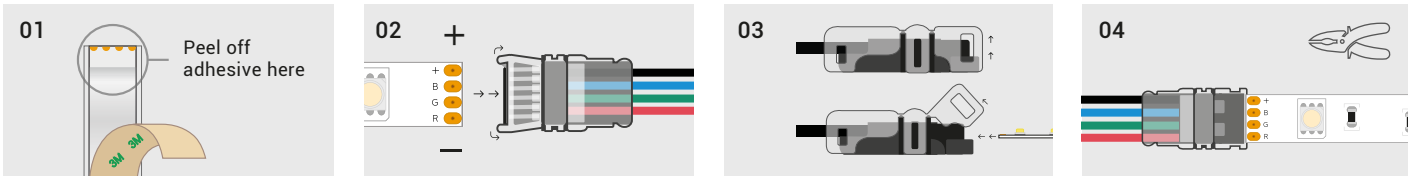
Strip Light Connectors

SKU	Description	Wire Gauge	Amperage Limit**	Diagram
GRIP-RGB-C1-12-0*	Grip RGB Connector with No Wire	-	5 Amps	
GRIP-RGB-C1-12-12*	Grip RGB Connector with 12" Bare Wire	20 AWG		
GRIP-RGB-C1-12-36*	Grip RGB Connector with 36" Bare Wire			
GRIP-RGB-C2-12-06*	Grip RGB Jumper Connector with 6" of Wire			
GRIP-RGB-C3-12-0*	Grip RGB Jumper Connector with No Wire	-		

* Calculate max length of LED strip to follow the solderless connector based on an amperage draw of 0.092 A/ft (0.3 A/m) at 24 volts.
 **Be sure no more than 5 amps is drawn after any solderless connector.



Installation



1. Remove 1/4" of 3M adhesive tape on the back from the end of the strip that you want to connect. It must be removed to allow it to fit properly with the solderless connector.

2. Double check the polarity of the strip to match the positive (+) markings together and negative (-) markings together. If you accidentally close the connector before you're ready, you can use a small flathead screwdriver to pry the top back open.

3. Open the top of the grip connector and insert the LED strip inside. Make sure the LED strip is facing up towards the translucent top and the solder pads are directly above the small hooks on the connector.

4. Once everything is in order, use pliers to close and lock the connector. You may hear a "click" sound when it's properly closed.

NOTE:

Soldering is the preferred method. If you need further assistance, please download our Solderless Connector Installation

Compatible Aluminum Extrusions

Name	Type	Included Accessories	Covers	Kit SKU	Mockup
Ion™	Surface Mount	-	-	ION-CH-A-1M	
Atlas™	Surface Mount	2 Open End Caps 2 Closed End Caps 4 Metal Mounting Clips	Clear Cover, 1 m (3' 3/8") Frosted Cover, 1 m (3' 3/8") Matte Cover, 1 m (3' 3/8")	ATL-CH-A-CVR-C-1M ATL-CH-A-CVR-F-1M ATL-CH-A-CVR-M-1M	
Gemini™	Surface Mount	2 Open End Caps 2 Closed End Caps 4 Metal Mounting Clips	Clear Cover, 1 m (3' 3/8") Frosted Cover, 1 m (3' 3/8") Matte Cover, 1 m (3' 3/8")	GEM-CH-A-CVR-C-1M GEM-CH-A-CVR-F-1M GEM-CH-A-CVR-M-1M	
Kepler™	Surface Mount	2 Open End Caps 2 Closed End Caps 4 Metal Mounting Clips	Clear Cover, 1 m (3' 3/8") Frosted Cover, 1 m (3' 3/8") Matte Cover, 1 m (3' 3/8")	KEP-CH-A-CVR-C-1M KEP-CH-A-CVR-F-1M KEP-CH-A-CVR-M-1M	
Note: This extrusion only fits the RGB150 Series LED strip without connectors.					
Laika™	Surface Mount	2 Open End Caps 2 Closed End Caps 4 Metal Mounting Clips	Clear Cover, 1 m (3' 3/8") Frosted Cover, 1 m (3' 3/8") Matte Cover, 1 m (3' 3/8")	LAI-CH-A-CVR-C-1M LAI-CH-A-CVR-F-1M	
Note: This extrusion only fits the RGB150 Series LED strip without connectors.					
Nova™	Surface Mount	2 Open End Caps 2 Closed End Caps 4 Metal Mounting Clips	Clear Round Cover, 1 m (3' 3/8") Clear Square, 1 m (3' 3/8") Matte Round Cover, 1 m (3' 3/8") Matte Square Cover, 1 m (3' 3/8")	NOV-CH-A-CVR-C-RD-1M NOV-CH-A-CVR-C-SQ-1M NOV-CH-A-CVR-M-RD-1M NOV-CH-A-CVR-M-SQ-1M	
Titan™	Surface Mount	2 Open End Caps 2 Closed End Caps 4 Metal Mounting Clips 6 Channel Connectors	Clear Cover, 1 m (3' 3/8") Frosted Cover, 1 m (3' 3/8") Matte Cover, 1 m (3' 3/8")	TTN-CH-A-CVR-C-1M TTN-CH-A-CVR-F-1M TTN-CH-A-CVR-M-1M	
Calypso™	Recessed	2 Open End Caps 2 Closed End Caps 4 Metal Mounting Clips	Clear Cover, 1 m (3' 3/8") Frosted Cover, 1 m (3' 3/8") Matte Cover, 1 m (3' 3/8")	CAL-CH-A-CVR-F-1M CAL-CH-A-CVR-M-1M	
Cassini™	Recessed	2 Open End Caps 2 Closed End Caps 4 Metal Mounting Clips	Clear Cover, 1 m (3' 3/8") Frosted Cover, 1 m (3' 3/8") Matte Cover, 1 m (3' 3/8")	CAS-CH-A-CVR-C-1M CAS-CH-A-CVR-F-1M CAS-CH-A-CVR-M-1M	
Phoenix™	Recessed	2 Open End Caps 2 Closed End Caps 6 Channel Connectors	Frosted Cover, 1 m (3' 3/8") Matte Cover, 1 m (3' 3/8")	PHO-CH-A-CVR-F-1M PHO-CH-A-CVR-M-1M	



Safety And Disclosures

1. Installation must be in accordance with local and national electrical code regulations.
2. To ensure safety and correct installation, our strips are intended to be installed by a qualified, licensed electrician.
3. Only install with a Class 2 DC Constant Voltage LED driver to meet UL requirements.
4. Do not install in environment where excessive heat may exist.
5. LED strip lights must be handled with care. Excessive handling, bending, and pressure may damage the product, voiding the warranty.
6. Do not install indoor LED tape light products in outdoor / wet location environments. Only use copper wiring. Use wires rated for at least 176°F (80°C) and certified for use with external connection of electrical equipment.
7. Each maximum run requires a dedicated power feed from the driver. Do not extend beyond the recommended maximum run length.
8. Make sure the appropriate gauge wire is installed between driver, LEDs, and any dimmers. When choosing wire, calculate voltage drop, maximum amperage rating, and the location ratings on the wire. Improper wire selection and installation could overheat wires, and cause fire.
9. Do not modify the product beyond instructions or warranty will be void.
10. We reserve the right to modify and improve the design of our fixtures without prior notice. Although we try our best to order the same colors every time, due to changes in technology and phosphors over time, we cannot guarantee to match existing installed fixtures for subsequent orders or replacements in regards to product appearance, CCT, or lumen output.

Warranty Information

Limited Warranty

This product has a 15 year limited warranty from the date of shipment. This warranty only includes the main product outlined in this specification sheet and does not include the additional accessories that are used as a reference. Complete warranty details for fixtures and additional accessories are available at <https://www.flexfireleds.com/warranties/> within the Policies section. For warranty related questions please contact the product support team at (support@flexfireleds.com).

Consumer's Acknowledgment

Flexfire LEDs, Inc. stands behind its products when they are used properly and according to our specifications. When you purchase our products, you are agreeing to the terms and conditions outlined in our warranty section. We try our best to make recommendations, but the burden of proper installation, design, and maintenance relies on the purchaser. This limited warranty does not include product failures that are the result of: Not using a voltage regulated power supply to connect the LED product or controls; Connecting LED products to the wrong output voltage; Improper connection of power supplies, LED products, or controls; Connecting LED products or controls directly to any AC power source if they are stated for DC only input; Connecting power supplies backwards to an AC power source; Products used in an inappropriate location or in environmental conditions (temperature, humidity, moisture, etc.) outside the normal specified range; Water damage to products not specifically sold as waterproof products; Electrical power surges and spikes; Damage from hail, flooding, tornado, fire, wind, earthquake, lightning, electrical storm, or any other natural disasters or "force majeure" incidences; Damage caused by a vehicle or other accident; Damage caused when transporting the item; Damage to any products that were modified by the user, used for purposes other than as intended or directed, or connected to LED systems or components not purchased from Flexfire LEDs; Products that have been subjected to misuse, mishandling, misapplication or accident. Products used in connection with any components, devices or systems other than those explicitly approved as compatible with Company's products and listed on Company's website. Excessive wear and tear and/or physical or accidental abuse, loss, or theft. Improper repairs or warranty services performed by someone other than Flexfire LEDs will void this warranty.

Contact Information



Toll Free Number:
1-844-353-9347



Local Number:
(925) 273-9080



info@flexfireleds.com



FLEXFIRELEDs

www.flexfireleds.com