

Measurement Protocol



Manufacturer: Flexfire LEDs, Inc.

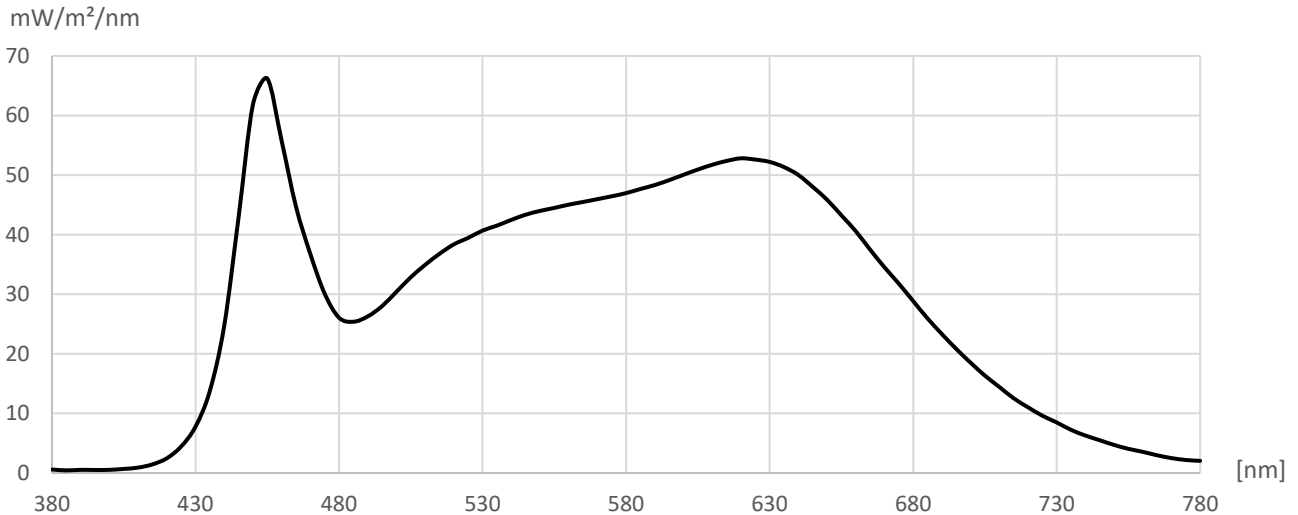
Measurement file: UB-AS-DYN.CSV

Type: UltraBright™ Architectural Dynamic LED Strip Li

Date of measurement: 03.07.2023

Model: UB-AS-DYN276290C

Time of measurement: 12:00:17



R1 = 97.6	Ra = 96.3	Illuminance	3,205.06 lx	CIE1931
R2 = 98.1	Re = 94.9	Ee	11.621 W/m²	x = 0.3694
R3 = 97.1	GAI = 88.0	LER	275.8 lm/W	y = 0.3565
R4 = 96.7				
R5 = 96.6	TLCI = 96.0	Correlated Color Temperature (CCT)	4,172 K	CIE1976
R6 = 94.1		Duv	-0.0064	u' = 0.2260
R7 = 95.5	PPFD			v' = 0.4907
R8 = 94.9	[μmol/m²s]	Saturation	17.80 %	
R9 = 90.9	52.01			CIE1960
R10 = 97.2		Dominant wavelength	583 nm	u = 0.2260
R11 = 96.2		Peak wavelength	453 nm	v = 0.3271
R12 = 75.1				
R13 = 98.4		Flicker frequency	% < 1.0	TM30
R14 = 98.1		Percent Flicker	< 1.0	Rf = 90.1
R15 = 97.3		Flicker index	% < 1.0	Rg = 100.5

[nm]	mW/m²/nm	[nm]	mW/m²/nm	[nm]	mW/m²/nm	[nm]	mW/m²/nm	[nm]	mW/m²/nm	[nm]	mW/m²/nm	[nm]	mW/m²/nm
380	0.59	440	24.68	500	30.42	560	45.04	620	52.82	680	28.88	740	6.29
385	0.44	445	42.86	505	32.86	565	45.49	625	52.61	685	25.96	745	5.50
390	0.53	450	61.80	510	34.93	570	45.97	630	52.22	690	23.34	750	4.71
395	0.51	455	66.22	515	36.79	575	46.45	635	51.35	695	20.84	755	4.06
400	0.53	460	55.79	520	38.38	580	46.98	640	50.03	700	18.53	760	3.55
405	0.69	465	44.74	525	39.47	585	47.67	645	48.04	705	16.35	765	2.98
410	0.91	470	36.78	530	40.69	590	48.33	650	45.88	710	14.46	770	2.51
415	1.45	475	30.11	535	41.52	595	49.15	655	43.26	715	12.55	775	2.19
420	2.47	480	26.08	540	42.48	600	50.05	660	40.60	720	11.04	780	2.04
425	4.45	485	25.39	545	43.35	605	50.94	665	37.51	725	9.63		
430	7.77	490	26.28	550	43.99	610	51.73	670	34.54	730	8.49		
435	13.77	495	28.01	555	44.49	615	52.38	675	31.80	735	7.25		

Measurement Protocol



Manufacturer: Flexfire LEDs, Inc.

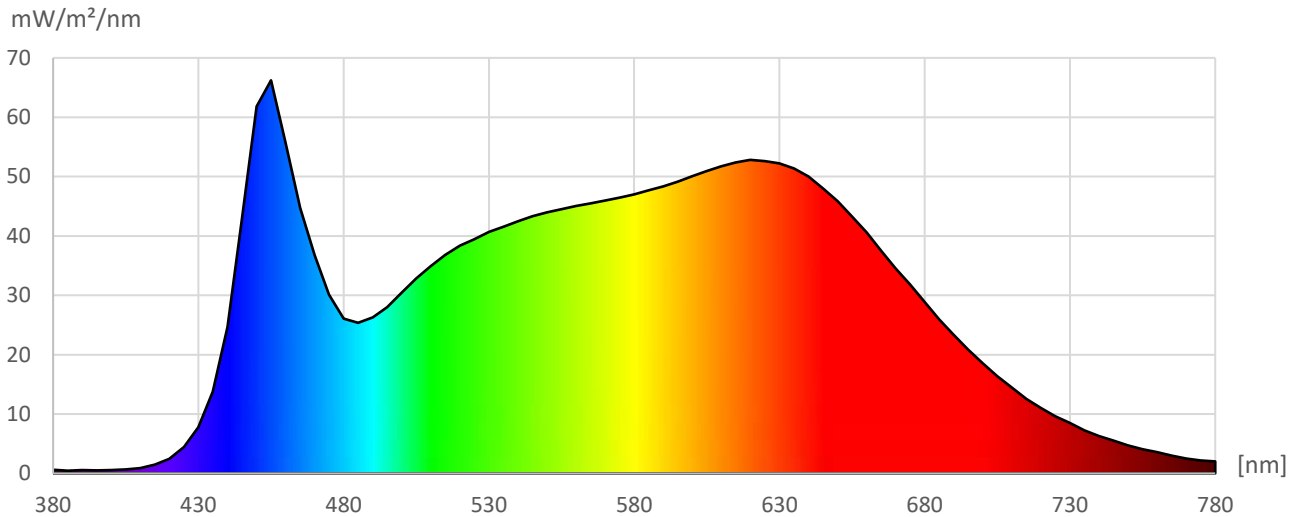
Measurement file: UB-AS-DYN.CSV

Type: UltraBright™ Architectural Dynamic LED Strip Liğ

Date of measurement: 03.07.2023

Model: UB-AS-DYN276290C

Time of measurement: 12:00:17



[nm]	mW/m²/nm	[nm]	mW/m²/nm	[nm]	mW/m²/nm	[nm]	mW/m²/nm	[nm]	mW/m²/nm	[nm]	mW/m²/nm	[nm]	mW/m²/nm
380	0.59	535	41.52	690	23.34								
385	0.44	540	42.48	695	20.84								
390	0.53	545	43.35	700	18.53								
395	0.51	550	43.99	705	16.35								
400	0.53	555	44.49	710	14.46								
405	0.69	560	45.04	715	12.55								
410	0.91	565	45.49	720	11.04								
415	1.45	570	45.97	725	9.63								
420	2.47	575	46.45	730	8.49								
425	4.45	580	46.98	735	7.25								
430	7.77	585	47.67	740	6.29								
435	13.77	590	48.33	745	5.50								
440	24.68	595	49.15	750	4.71								
445	42.86	600	50.05	755	4.06								
450	61.80	605	50.94	760	3.55								
455	66.22	610	51.73	765	2.98								
460	55.79	615	52.38	770	2.51								
465	44.74	620	52.82	775	2.19								
470	36.78	625	52.61	780	2.04								
475	30.11	630	52.22										
480	26.08	635	51.35										
485	25.39	640	50.03										
490	26.28	645	48.04										
495	28.01	650	45.88										
500	30.42	655	43.26										
505	32.86	660	40.60										
510	34.93	665	37.51										
515	36.79	670	34.54										
520	38.38	675	31.80										
525	39.47	680	28.88										
530	40.69	685	25.96										

Measurement Protocol



Manufacturer: Flexfire LEDs, Inc.

Measurement file: UB-AS-DYN.CSV

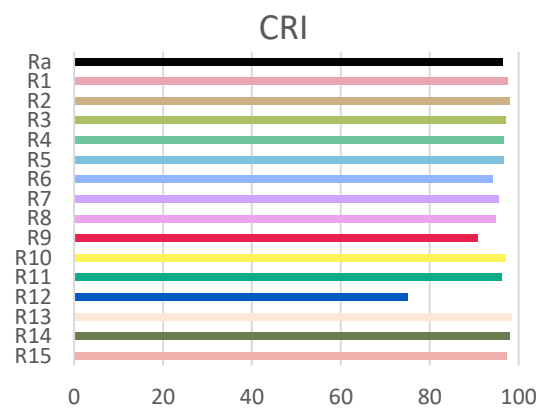
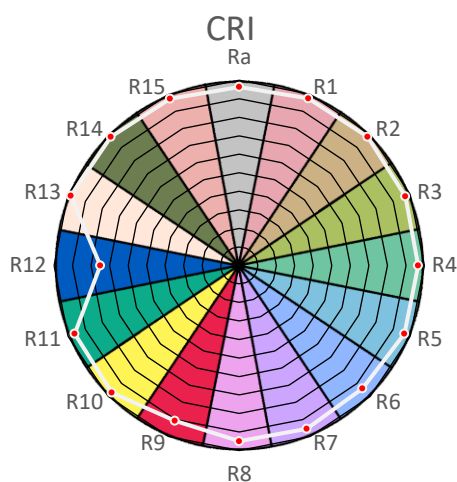
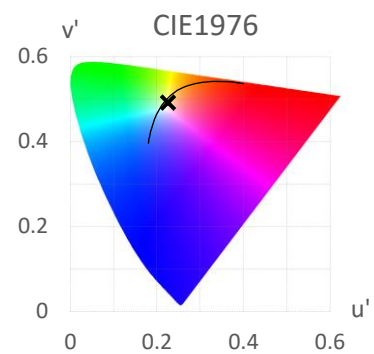
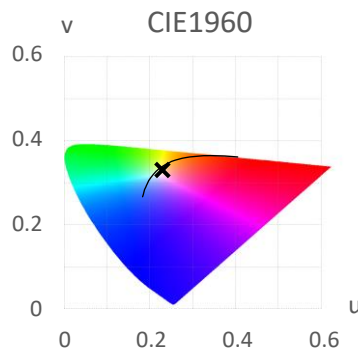
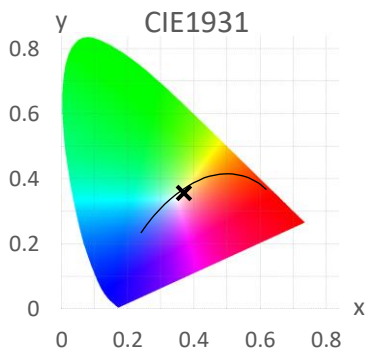
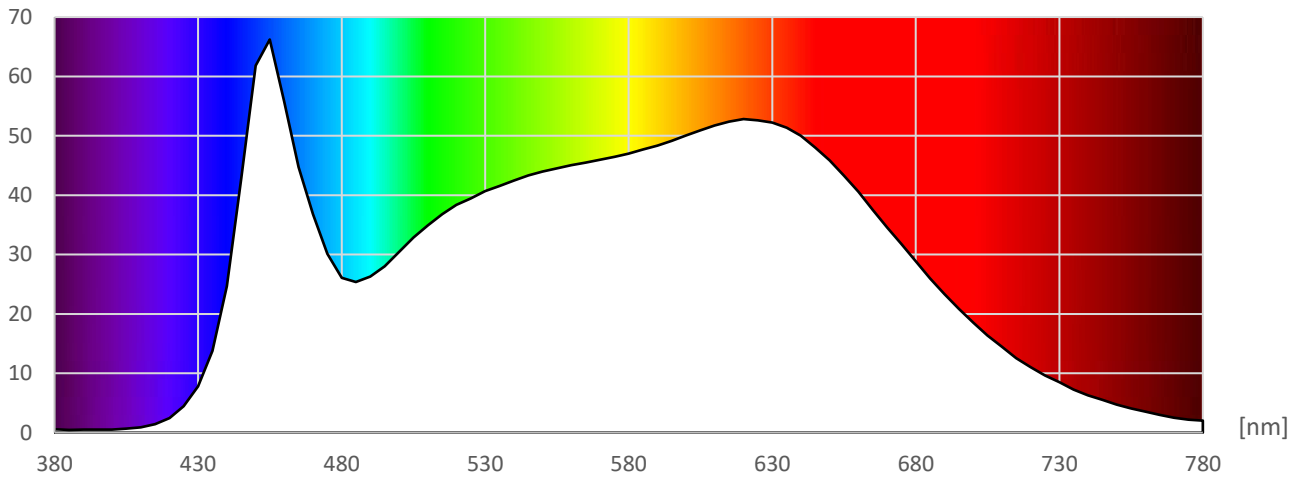
Type: UltraBright™ Architectural Dynamic LED Strip Liğ

Date of measurement: 03.07.2023

Model: UB-AS-DYN276290C

Time of measurement: 12:00:17

mW/m²/nm



Measurement Protocol



Manufacturer: Flexfire LEDs, Inc.

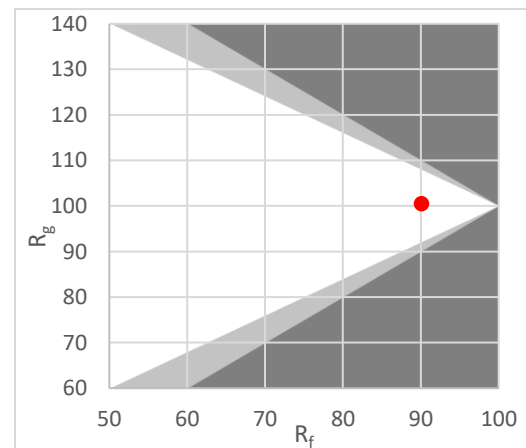
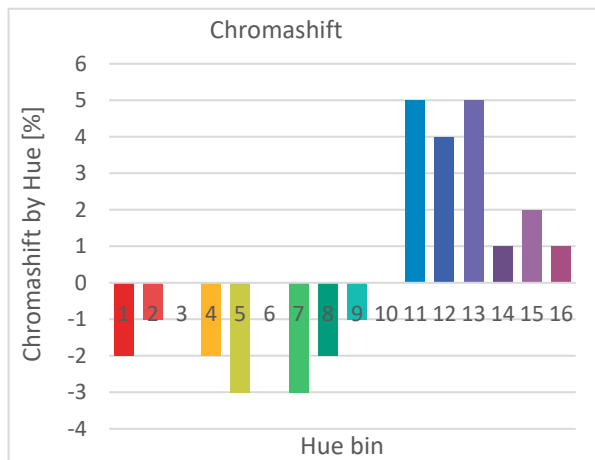
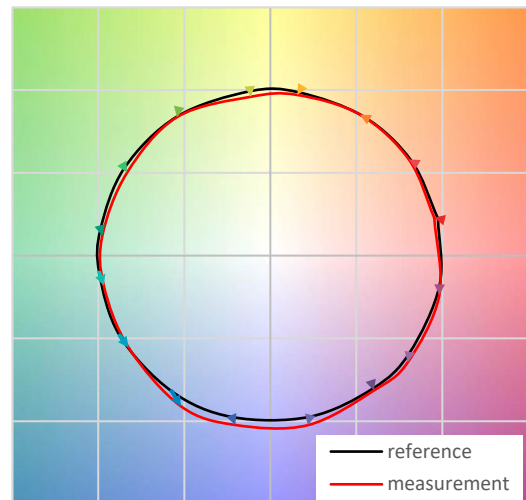
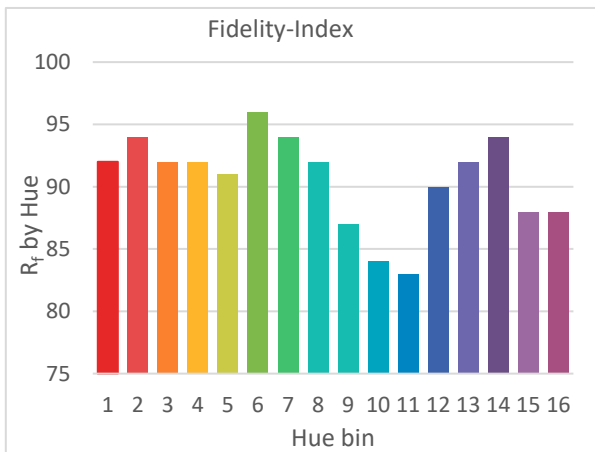
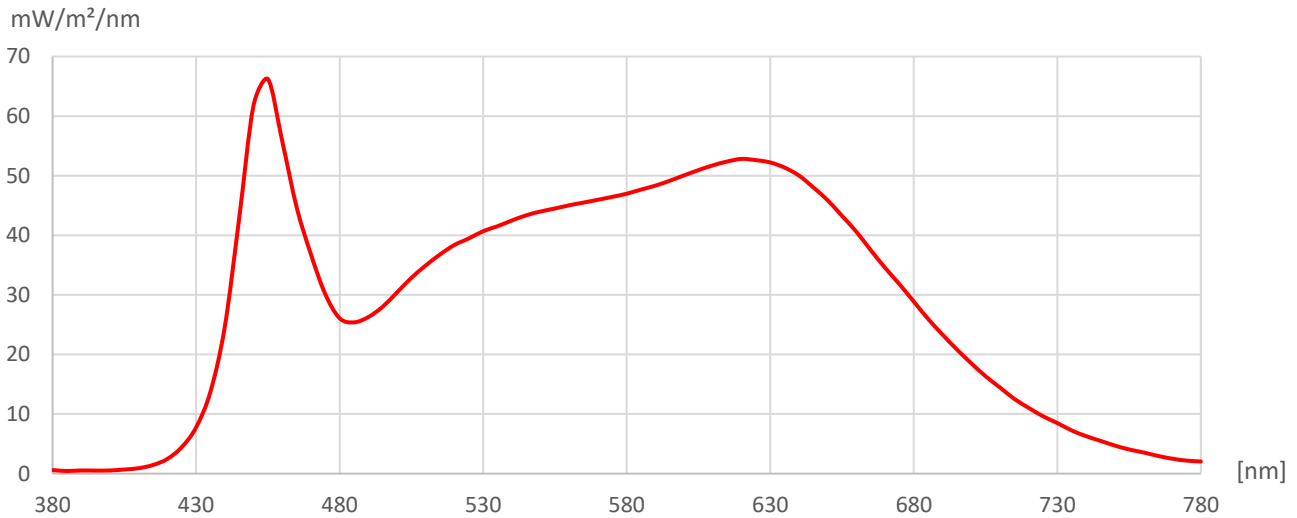
Type: UltraBright™ Architectural Dynamic LED Strip Liğ

Model: UB-AS-DYN276290C

Measurement file: UB-AS-DYN.CSV

Date of measurement: 03.07.2023

Time of measurement: 12:00:17



Measurement Protocol



Manufacturer: Flexfire LEDs, Inc.

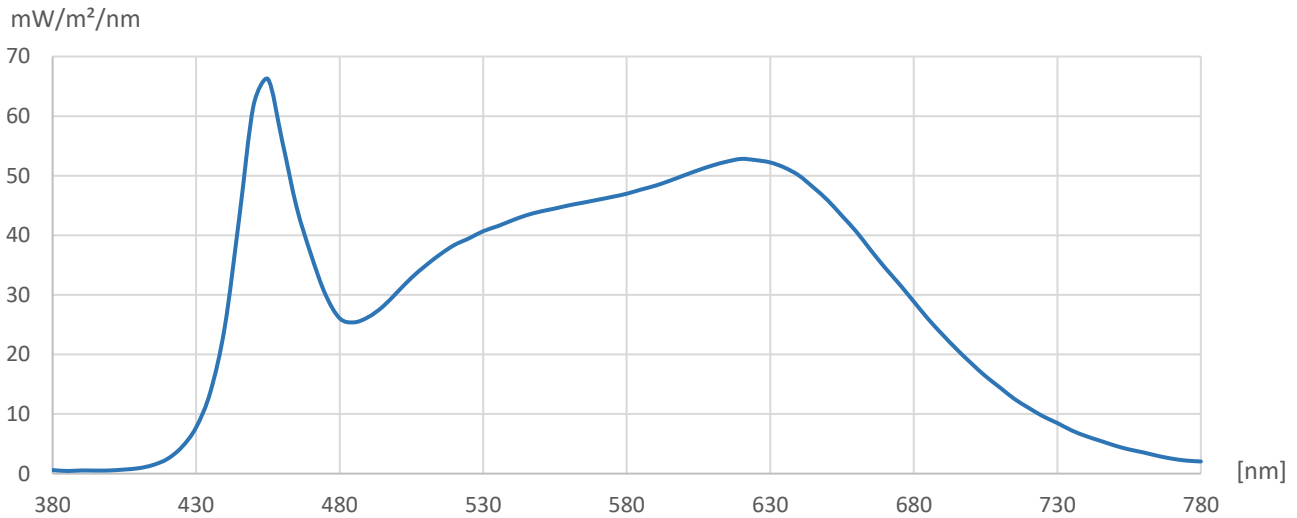
Measurement file: UB-AS-DYN.CSV

Type: UltraBright™ Architectural Dynamic LED Strip Liğ

Date of measurement: 03.07.2023

Model: UB-AS-DYN276290C

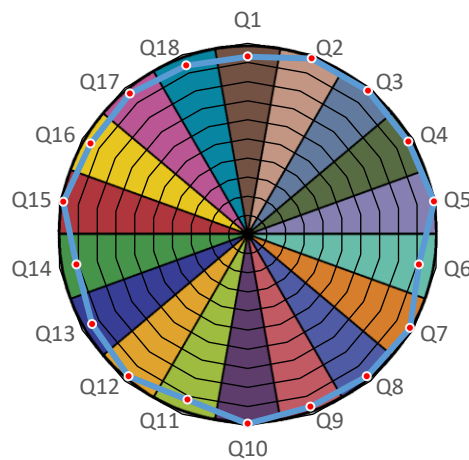
Time of measurement: 12:00:17



correlated color temperature (CCT) 4,172 K
TLCI 96

Reference Spectrum Plank-Daylight Mix

	Lightness	Chroma	Hue
R	1	0	0
R/Y	0	0	-1
Y	0	0	-1
Y/G	0	-1	0
G	0	0	0
G/C	0	0	0
C	0	0	0
C/B	0	0	-1
B	0	-1	-1
B/M	0	0	1
M	0	0	1
M/R	1	0	1



Test Colour	Value	Test Colour	Value	Test Colour	Value
Q1 Dark skin	93	Q7 Orange	98	Q13 Blue	94
Q2 Light skin	98	Q8 Purplish blue	97	Q14 Green	91
Q3 Blue sky	98	Q9 Moderate red	96	Q15 Red	98
Q4 Foliage	97	Q10 Purple	99	Q16 Yellow	95
Q5 Blue flower	99	Q11 Yellow green	92	Q17 Magenta	96
Q6 Bluish green	91	Q12 Orange yellow	97	Q18 Cyan	94