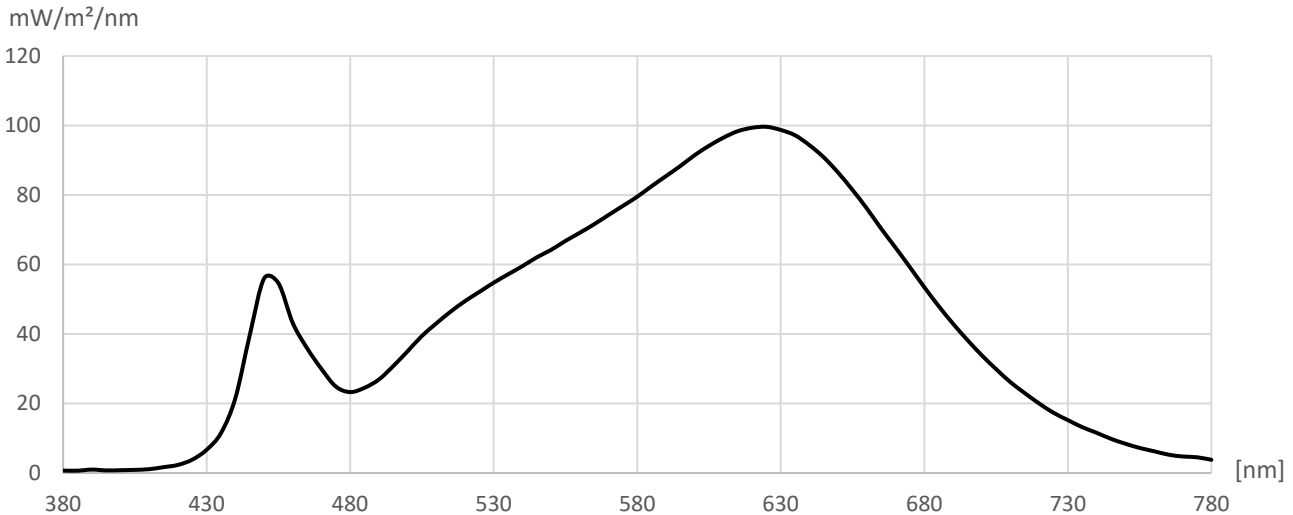


Measurement Protocol



Manufacturer: Flexfire LEDs, Inc.
 Type: UltraBright™ Industrial Series LED Strip Light
 Model: UB-IS-30K90C

Measurement file: UB-IS-30K90C.CSV
 Date of measurement: 03.07.2023
 Time of measurement: 13:10:42



R1 = 93.3	Ra = 92.8	Illuminance	4,999.19 lx	CIE1931
R2 = 96.7	Re = 90.2	Ee	17.613 W/m ²	x = 0.4326
R3 = 97.5	GAI = 61.4	LER	283.8 lm/W	y = 0.3962
R4 = 92.0				
R5 = 92.8	TLCI = 92.0	Correlated Color Temperature (CCT)	2,994 K	CIE1976
R6 = 95.0		Duv	-0.0026	u' = 0.2512
R7 = 91.7	PPFD			v' = 0.5176
R8 = 83.1	[μmol/m ² s]	Saturation	48.60 %	
R9 = 63.3	80.50			CIE1960
R10 = 91.1		Dominant wavelength	583 nm	u = 0.2512
R11 = 92.0		Peak wavelength	625 nm	v = 0.3451
R12 = 80.8				
R13 = 94.4		Flicker frequency	% < 1.0	TM30
R14 = 98.3		Percent Flicker	< 1.0	Rf = 89.9
R15 = 90.6		Flicker index	% < 1.0	Rg = 100.4

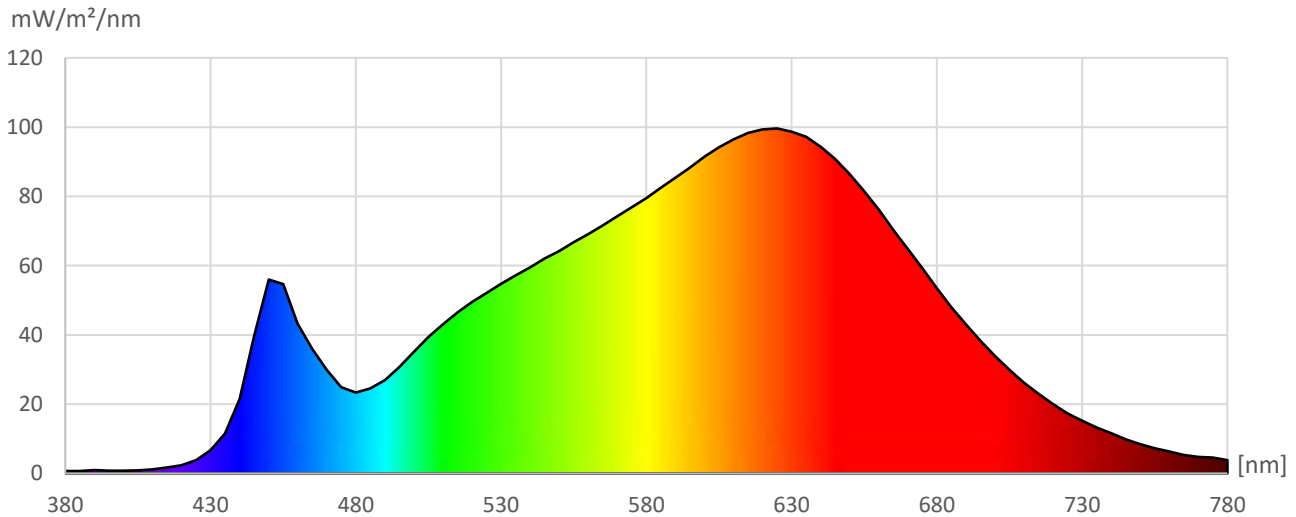
[nm]	mW/m ² /nm	[nm]	mW/m ² /nm	[nm]	mW/m ² /nm	[nm]	mW/m ² /nm	[nm]	mW/m ² /nm	[nm]	mW/m ² /nm	[nm]	mW/m ² /nm
380	0.69	440	21.52	500	35.03	560	69.14	620	99.34	680	53.47	740	11.58
385	0.67	445	39.60	505	39.44	565	71.58	625	99.61	685	48.05	745	9.85
390	0.99	450	55.95	510	43.04	570	74.24	630	98.71	690	42.98	750	8.44
395	0.75	455	54.63	515	46.44	575	76.86	635	97.17	695	38.30	755	7.22
400	0.82	460	43.17	520	49.46	580	79.49	640	94.33	700	33.91	760	6.28
405	0.90	465	35.90	525	52.11	585	82.52	645	90.81	705	29.91	765	5.29
410	1.11	470	29.94	530	54.76	590	85.41	650	86.42	710	26.15	770	4.76
415	1.68	475	24.89	535	57.16	595	88.32	655	81.45	715	23.00	775	4.53
420	2.33	480	23.29	540	59.52	600	91.44	660	76.11	720	20.01	780	3.80
425	3.85	485	24.52	545	62.06	605	94.14	665	70.29	725	17.35		
430	6.69	490	26.90	550	64.21	610	96.48	670	64.83	730	15.23		
435	11.51	495	30.76	555	66.77	615	98.35	675	59.22	735	13.21		

Measurement Protocol



Manufacturer: Flexfire LEDs, Inc.
 Type: UltraBright™ Industrial Series LED Strip Light
 Model: UB-IS-30K90C

Measurement file: UB-IS-30K90C.CSV
 Date of measurement: 03.07.2023
 Time of measurement: 13:10:42



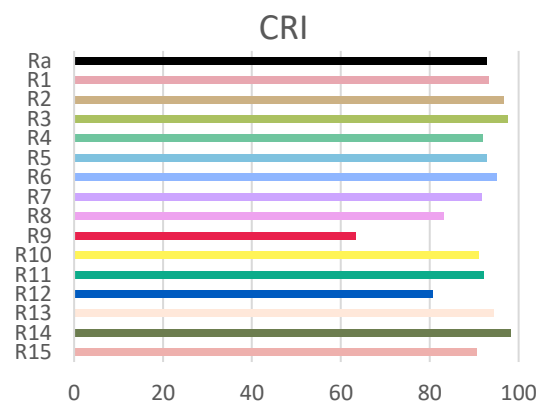
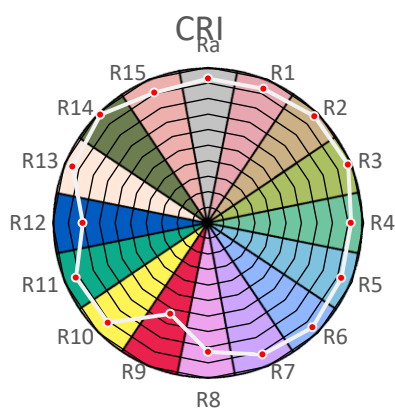
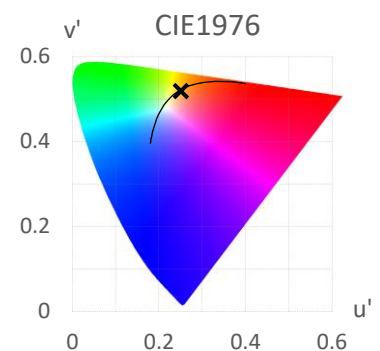
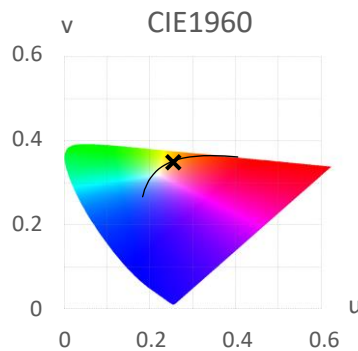
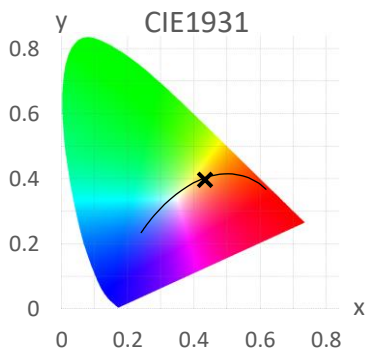
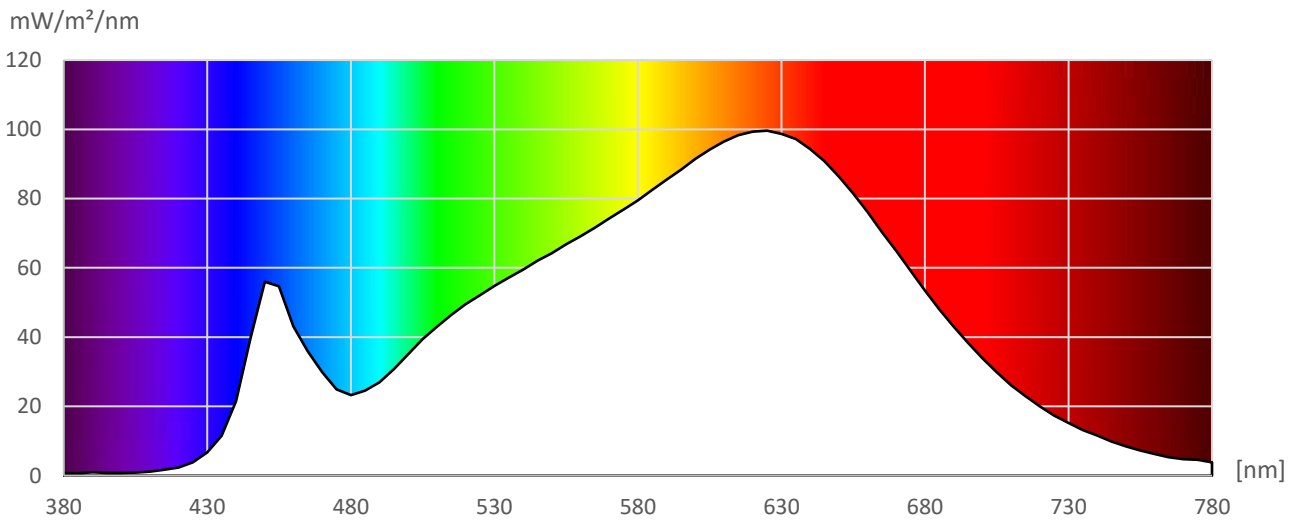
[nm]	mW/m²/nm	[nm]	mW/m²/nm	[nm]	mW/m²/nm	[nm]	mW/m²/nm	[nm]	mW/m²/nm	[nm]	mW/m²/nm	[nm]	mW/m²/nm
380	0.69	535	57.16	690	42.98								
385	0.67	540	59.52	695	38.30								
390	0.99	545	62.06	700	33.91								
395	0.75	550	64.21	705	29.91								
400	0.82	555	66.77	710	26.15								
405	0.90	560	69.14	715	23.00								
410	1.11	565	71.58	720	20.01								
415	1.68	570	74.24	725	17.35								
420	2.33	575	76.86	730	15.23								
425	3.85	580	79.49	735	13.21								
430	6.69	585	82.52	740	11.58								
435	11.51	590	85.41	745	9.85								
440	21.52	595	88.32	750	8.44								
445	39.60	600	91.44	755	7.22								
450	55.95	605	94.14	760	6.28								
455	54.63	610	96.48	765	5.29								
460	43.17	615	98.35	770	4.76								
465	35.90	620	99.34	775	4.53								
470	29.94	625	99.61	780	3.80								
475	24.89	630	98.71										
480	23.29	635	97.17										
485	24.52	640	94.33										
490	26.90	645	90.81										
495	30.76	650	86.42										
500	35.03	655	81.45										
505	39.44	660	76.11										
510	43.04	665	70.29										
515	46.44	670	64.83										
520	49.46	675	59.22										
525	52.11	680	53.47										
530	54.76	685	48.05										

Measurement Protocol



Manufacturer: Flexfire LEDs, Inc.
 Type: UltraBright™ Industrial Series LED Strip Light
 Model: UB-IS-30K90C

Measurement file: UB-IS-30K90C.CSV
 Date of measurement: 03.07.2023
 Time of measurement: 13:10:42

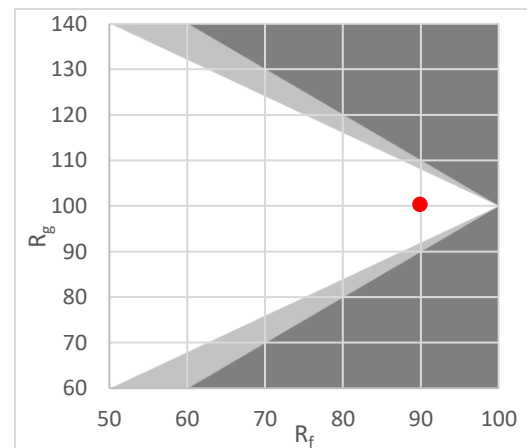
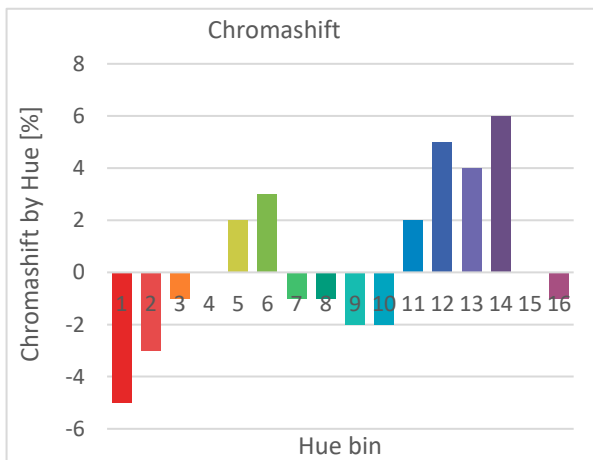
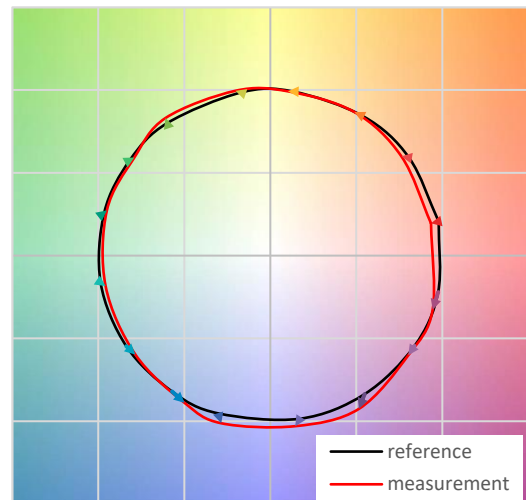
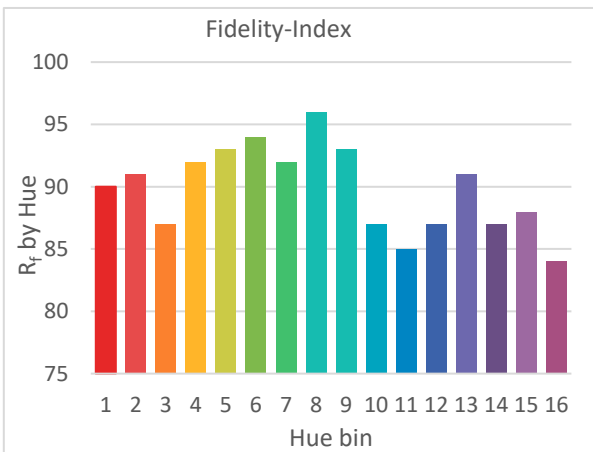
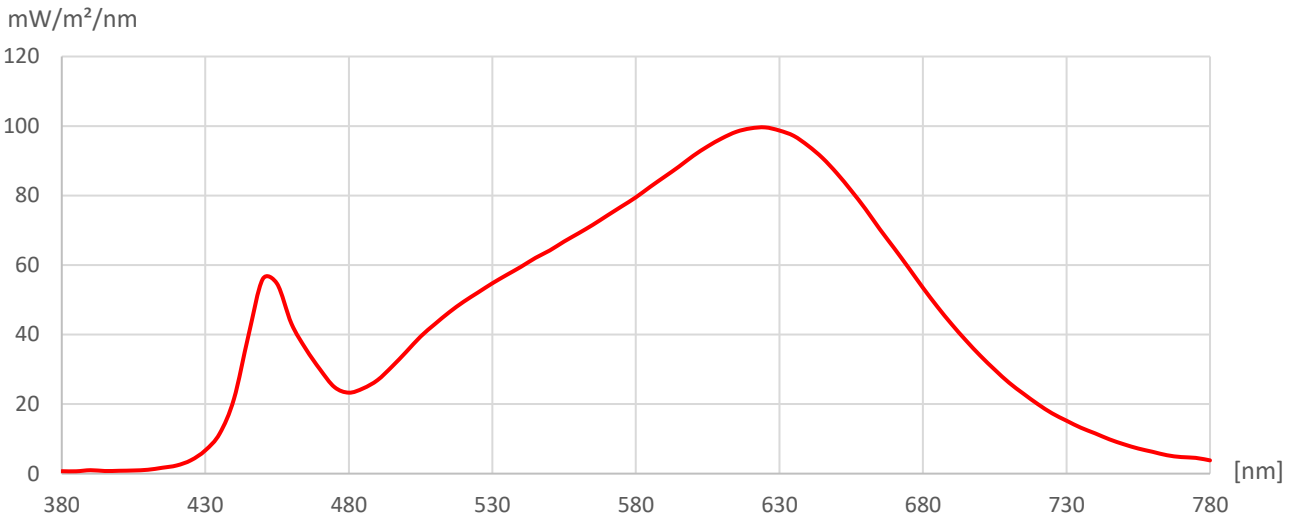


Measurement Protocol



Manufacturer: Flexfire LEDs, Inc.
 Type: UltraBright™ Industrial Series LED Strip Light
 Model: UB-IS-30K90C

Measurement file: UB-IS-30K90C.CSV
 Date of measurement: 03.07.2023
 Time of measurement: 13:10:42

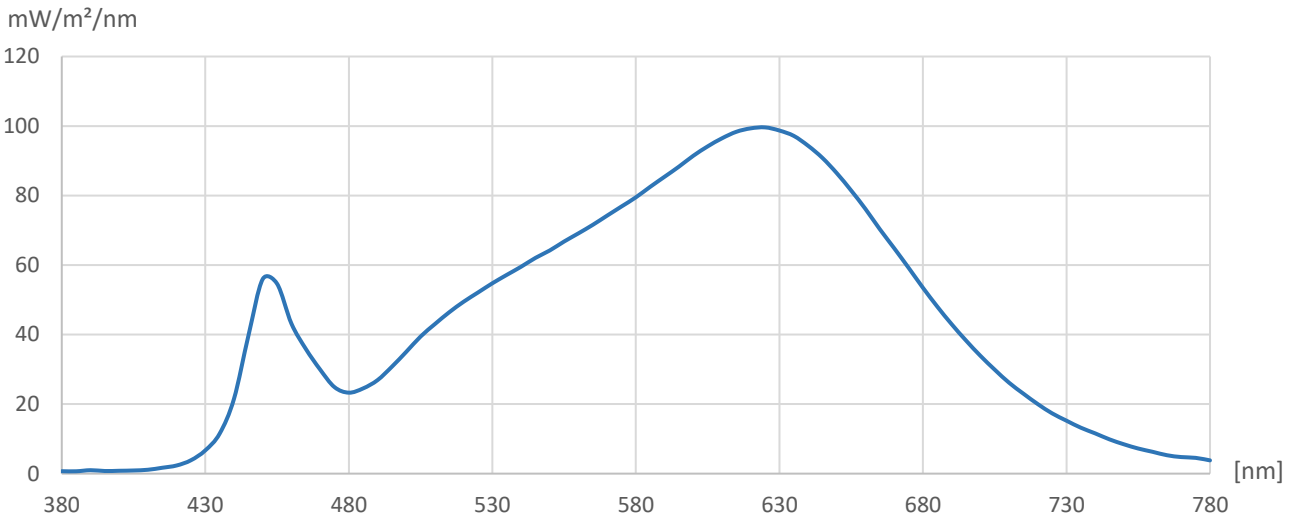


Measurement Protocol



Manufacturer: Flexfire LEDs, Inc.
 Type: UltraBright™ Industrial Series LED Strip Light
 Model: UB-IS-30K90C

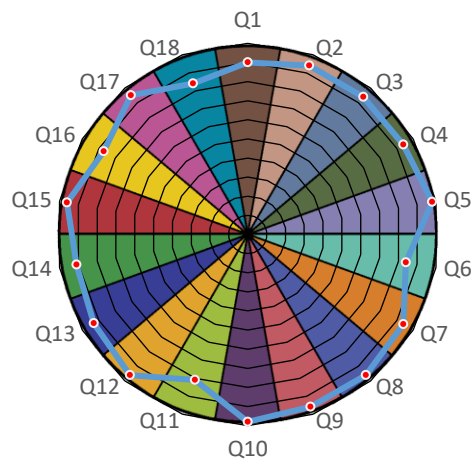
Measurement file: UB-IS-30K90C.CSV
 Date of measurement: 03.07.2023
 Time of measurement: 13:10:42



correlated color temperature (CCT) 2,994 K
 TLCI 92

Reference Spectrum Plank

	Lightness	Chroma	Hue
R	1	0	0
R/Y	0	0	-1
Y	0	0	-1
Y/G	0	0	0
G	0	0	1
G/C	0	0	1
C	0	0	1
C/B	0	0	-1
B	0	-1	-1
B/M	1	-1	2
M	1	0	2
M/R	1	0	2



Test Colour	Value	Test Colour	Value	Test Colour	Value
Q1 Dark skin	90	Q7 Orange	94	Q13 Blue	93
Q2 Light skin	94	Q8 Purplish blue	96	Q14 Green	91
Q3 Blue sky	94	Q9 Moderate red	96	Q15 Red	96
Q4 Foliage	94	Q10 Purple	98	Q16 Yellow	87
Q5 Blue flower	98	Q11 Yellow green	81	Q17 Magenta	95
Q6 Bluish green	84	Q12 Orange yellow	96	Q18 Cyan	84