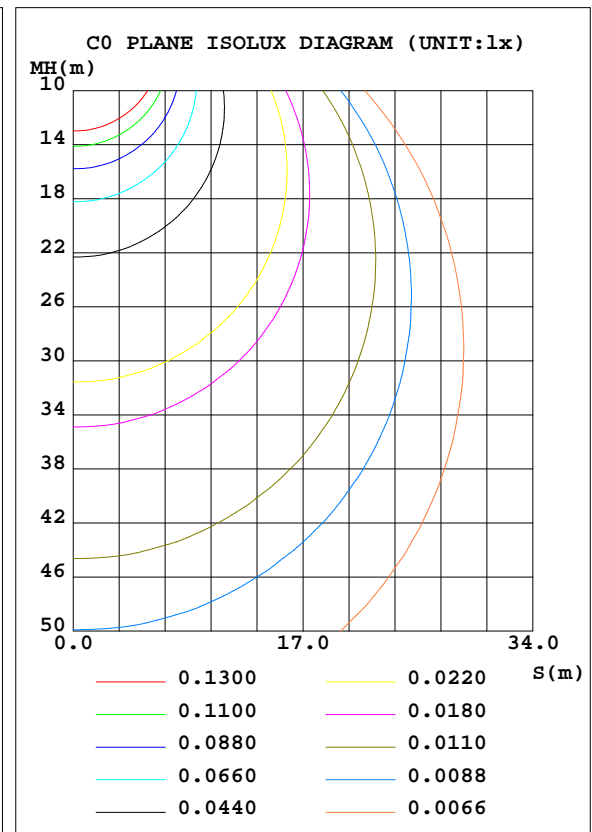
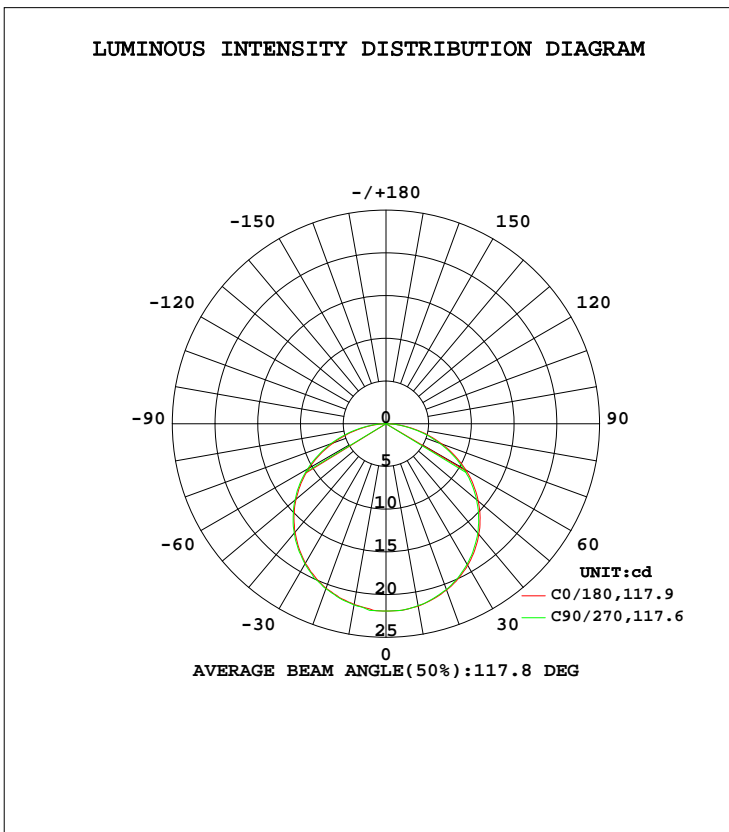


LUMINAIRE PHOTOMETRIC TEST REPORT

Test:U:23.95V I:0.0536A P:1.284W PF:1.000 Lamp Flux:66.9237x1 lm		
NAME: UB-SNA-DW183090C (1800K)	TYPE: LED Strip	WEIGHT: 0.01 Kg
SPEC.: 11W	DIM.:1000*10*2 (MM)	SERIAL No.: 001
MFR.: Flexfire LEDs, Inc.	SUR.:1000*10 (MM)	Shielding Angle:120

DATA OF LAMP		PHOTOMETRIC DATA Eff: 52.14 lm/W			
MODEL		I _{max} (cd)	21.95	S/MH(C0/180)	1.28
NOMINAL POWER(W)		LOR(%)	100.0	S/MH(C90/270)	1.28
RATED VOLTAGE(V)	24	TOTAL FLUX(lm)	66.924	η UP, DN(C0-180)	0.3,49.4
NOMINAL FLUX(lm)	66.9237	CIE CLASS	DIRECT	η UP, DN(C180-360)	0.3,50.0
LAMPS INSIDE	1	η up(%)	0.6	CIBSE SHR NOM	1.25
TEST VOLTAGE(V)	23.95	η down(%)	99.4	CIBSE SHR MAX	1.35



C Range: 0 - 360DEG
 C Interval: 22.5DEG
 Test Speed: HIGH
 Temperature:25.3DEG
 Test Date:2020-11-24

γ Range: 0 - 180DEG
 γ Interval: 1.0DEG
 Test System:EVERFINE GO-2000B_V1 SYSTEM V2.0.351
 Humidity:65.0%
 Test Distance:9.660m [K=1.0000]
 Remarks:

ZONAL FLUX DIAGRAM

ZONAL FLUX DIAGRAM:

γ	C0	C45	C90	C135	C180	C225	C270	C315	γ	Φ zone	Φ total	%lum, lamp
10	21.69	21.64	21.61	21.64	21.48	21.49	21.54	21.55	0- 10	2.077	2.077	3.1,3.1
20	20.72	20.66	20.66	20.64	20.49	20.49	20.55	20.56	10- 20	5.974	8.051	12,12
30	19.12	19.03	18.99	18.97	18.88	18.91	18.95	18.97	20- 30	9.164	17.21	25.7,25.7
40	16.89	16.77	16.71	16.68	16.57	16.66	16.72	16.75	30- 40	11.21	28.43	42.5,42.5
50	14.10	13.92	13.84	13.85	13.76	13.85	13.89	13.97	40- 50	11.86	40.29	60.2,60.2
60	10.77	10.58	10.48	10.48	10.38	10.51	10.61	10.64	50- 60	10.98	51.27	76.6,76.6
70	6.975	6.758	6.687	6.667	6.573	6.795	6.876	6.931	60- 70	8.610	59.88	89.5,89.5
80	3.087	2.918	2.859	2.842	2.745	2.895	3.064	3.077	70- 80	5.100	64.98	97.1,97.1
90	0.1536	0.3197	0.3654	0.3503	0.1359	0.2270	0.3480	0.3179	80- 90	1.529	66.51	99.4,99.4
100	0.0456	0.0607	0.0608	0.0609	0.0608	0.0607	0.0608	0.0455	90-100	0.1090	66.62	99.5,99.5
110	0.0456	0.0607	0.0608	0.0607	0.0911	0.0607	0.0608	0.0607	100-110	0.0614	66.68	99.6,99.6
120	0.0456	0.0607	0	0.0607	0.1063	0.0607	0.0608	0.0607	110-120	0.0562	66.74	99.7,99.7
130	0.0606	0.0607	0	0.0607	0.1063	0.0607	0.0608	0.0607	120-130	0.0511	66.79	99.8,99.8
140	0.1215	0.0607	0	0.0607	0.1063	0.0607	0.0608	0.0607	130-140	0.0475	66.84	99.9,99.9
150	0.0304	0.0607	0.0152	0.0607	0.1063	0.0607	0.0608	0.0607	140-150	0.0383	66.88	99.9,99.9
160	0.0304	0.0607	0.0152	0.0607	0.1063	0.0607	0.0608	0.0607	150-160	0.0259	66.90	100,100
170	0.0456	0.0607	0.0457	0.0607	0.1063	0.0607	0.0608	0.0607	160-170	0.0162	66.92	100,100
180	0.0456	0.0607	0.0456	0.0304	0.1063	0.0607	0.0608	0.0607	170-180	0.0056	66.92	100,100
DEG	LUMINOUS INTENSITY:cd									UNIT:lm		

Conical surface Flux(90deg): 34.372 lm

%lum = 51.4%
%lamp = 51.4%

Conical surface Flux(120deg): 51.273 lm

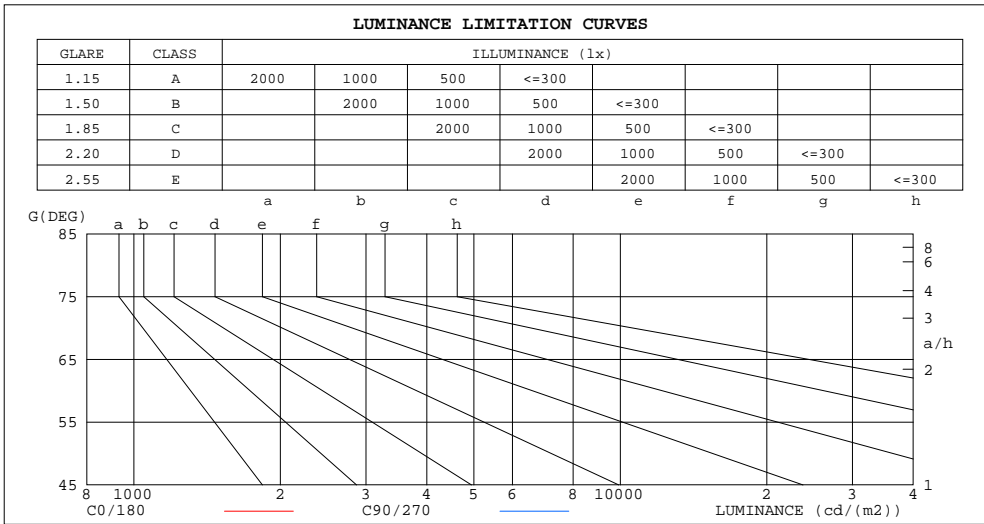
%lum = 76.6%
%lamp = 76.6%

C Range: 0 - 360DEG
C Interval: 22.5DEG
Test Speed: HIGH
Temperature:25.3DEG
Test Date:2020-11-24

γ Range: 0 - 180DEG
γ Interval: 1.0DEG
Test System:EVERFINE GO-2000B_V1 SYSTEM V2.0.351
Humidity:65.0%
Test Distance:9.660m [K=1.0000]
Remarks:

LUMINANCE LIMITATION CURVES

Test:U:23.95V I:0.0536A P:1.284W PF:1.000 Lamp Flux:66.9237x1 lm		
NAME: UB-SNA-DW183090C (1800K)	TYPE: LED Strip	WEIGHT: 0.01 Kg
SPEC.: 11W	DIM.:1000*10*2 (MM)	SERIAL No.: 001
MFR.: Flexfire LEDs, Inc.	SUR.:1000*10 (MM)	Shielding Angle:120



LUMINANCE cd/(m2)		
G(DEG)	C0/180	C90/270
85	733956	751059
80	888710	823128
75	971714	919053
70	1019481	977259
65	1055016	1019107
60	1076930	1048080
55	1088366	1065864
50	1096378	1076299
45	1101805	1083587

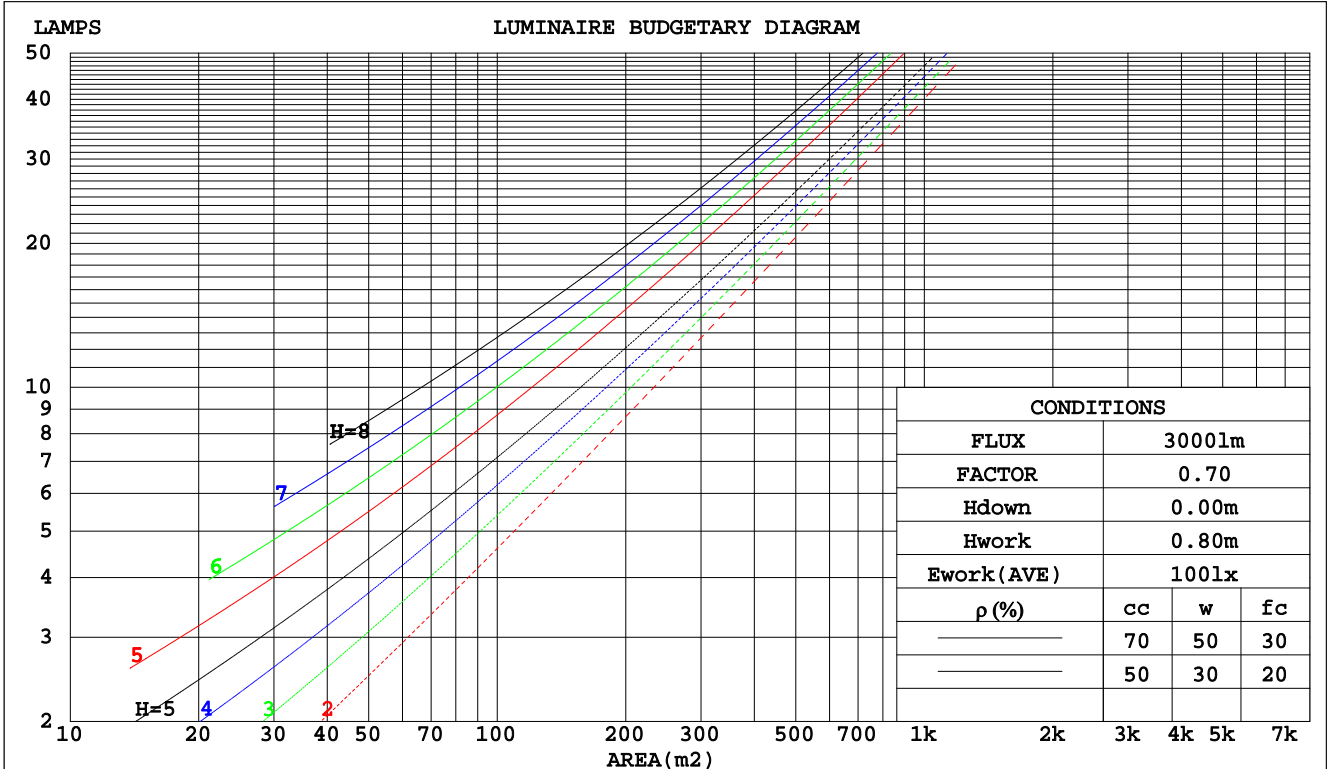
C Range: 0 - 360DEG
 C Interval: 22.5DEG
 Test Speed: HIGH
 Temperature:25.3DEG
 Test Date:2020-11-24

γ Range: 0 - 180DEG
 γ Interval: 1.0DEG
 Test System:EVERFINE GO-2000B_V1 SYSTEM V2.0.351
 Humidity:65.0%
 Test Distance:9.660m [K=1.0000]
 Remarks:

CU AND LUMINAIRE BUDGETARY ESTIMATE DIAGRAM

Test:U:23.95V I:0.0536A P:1.284W PF:1.000 Lamp Flux:66.9237x1 lm		
NAME: UB-SNA-DW183090C (1800K)	TYPE: LED Strip	WEIGHT: 0.01 Kg
SPEC.: 11W	DIM.:1000*10*2 (MM)	SERIAL No.: 001
MFR.: Flexfire LEDs, Inc.	SUR.:1000*10 (MM)	Shielding Angle:120

pcc	80%			70%			50%			30%			10%			0
	50%	30%	10%	50%	30%	10%	50%	30%	10%	50%	30%	10%	50%	30%	10%	0
pw																0
pfc	20%			20%			20%			20%			20%			0
RCR	RCR:Room Cavity Ratio Coefficients of Utilization(CU)															
0.0	1.19	1.19	1.19	1.16	1.16	1.16	1.11	1.11	1.11	1.06	1.06	1.06	1.01	1.01	1.01	.99
1.0	1.03	.99	.95	1.01	.97	.93	.96	.93	.90	.92	.90	.87	.89	.87	.84	.82
2.0	.90	.83	.77	.88	.81	.76	.84	.78	.74	.81	.76	.72	.77	.74	.70	.68
3.0	.78	.70	.63	.77	.69	.63	.74	.67	.61	.71	.65	.60	.68	.63	.59	.57
4.0	.69	.60	.53	.68	.59	.53	.65	.58	.52	.63	.56	.51	.60	.55	.51	.48
5.0	.62	.52	.46	.60	.52	.45	.58	.51	.45	.56	.50	.44	.54	.48	.44	.42
6.0	.55	.46	.40	.54	.46	.40	.53	.45	.39	.51	.44	.39	.49	.43	.38	.36
7.0	.50	.41	.35	.49	.41	.35	.48	.40	.34	.46	.39	.34	.45	.39	.34	.32
8.0	.46	.37	.31	.45	.37	.31	.44	.36	.31	.42	.35	.31	.41	.35	.30	.28
9.0	.42	.34	.28	.41	.33	.28	.40	.33	.28	.39	.32	.27	.38	.32	.27	.25
10.0	.39	.31	.25	.38	.30	.25	.37	.30	.25	.36	.29	.25	.35	.29	.25	.23



C Range: 0 - 360DEG
 C Interval: 22.5DEG
 Test Speed: HIGH
 Temperature: 25.3DEG
 Test Date: 2020-11-24

γ Range: 0 - 180DEG
 γ Interval: 1.0DEG
 Test System: EVERFINE GO-2000B_V1 SYSTEM V2.0.351
 Humidity: 65.0%
 Test Distance: 9.660m [K=1.0000]
 Remarks:

WEC AND CCEC

Test:U:23.95V I:0.0536A P:1.284W PF:1.000 Lamp Flux:66.9237x1 lm		
NAME: UB-SNA-DW183090C (1800K)	TYPE: LED Strip	WEIGHT: 0.01 Kg
SPEC.: 11W	DIM.:1000*10*2 (MM)	SERIAL No.: 001
MFR.: Flexfire LEDs, Inc.	SUR.:1000*10 (MM)	Shielding Angle:120

ρcc	80%			70%			50%			30%			10%			0
ρw	50%	30%	10%	50%	30%	10%	50%	30%	10%	50%	30%	10%	50%	30%	10%	0
ρfc	20%			20%			20%			20%			20%			0
RCR	RCR:Room Cavity Ratio						Wall Exitance Coefficients(WEC)									
0.0																
1.0	.320	.182	.058	.312	.178	.057	.299	.171	.055	.286	.165	.053	.275	.159	.051	
2.0	.299	.164	.050	.293	.161	.050	.280	.156	.048	.269	.151	.047	.259	.146	.046	
3.0	.276	.147	.044	.270	.145	.044	.259	.140	.043	.249	.137	.042	.240	.133	.041	
4.0	.254	.132	.039	.249	.130	.038	.239	.127	.038	.230	.124	.037	.222	.121	.037	
5.0	.234	.119	.035	.229	.118	.034	.221	.115	.034	.213	.112	.033	.206	.110	.033	
6.0	.217	.109	.031	.213	.107	.031	.205	.105	.031	.198	.103	.030	.191	.101	.030	
7.0	.201	.100	.028	.198	.099	.028	.191	.097	.028	.185	.095	.028	.179	.093	.027	
8.0	.188	.092	.026	.185	.091	.026	.179	.089	.025	.173	.088	.025	.167	.086	.025	
9.0	.176	.085	.024	.173	.084	.024	.167	.083	.023	.162	.081	.023	.158	.080	.023	
10.0	.165	.079	.022	.163	.079	.022	.158	.077	.022	.153	.076	.022	.149	.075	.021	

ρcc	80%			70%			50%			30%			10%			0
ρw	50%	30%	10%	50%	30%	10%	50%	30%	10%	50%	30%	10%	50%	30%	10%	0
ρfc	20%			20%			20%			20%			20%			0
RCR	RCR:Room Cavity Ratio						Ceiling Cavity Exitance Coefficients(CCEC)									
0.0	.195	.195	.195	.167	.167	.167	.114	.114	.114	.065	.065	.065	.021	.021	.021	
1.0	.186	.161	.138	.159	.138	.119	.109	.095	.082	.063	.055	.048	.020	.018	.015	
2.0	.178	.137	.102	.152	.118	.088	.104	.081	.061	.060	.047	.036	.019	.015	.012	
3.0	.170	.119	.078	.146	.103	.068	.100	.071	.048	.058	.042	.028	.019	.014	.009	
4.0	.163	.106	.062	.140	.091	.054	.096	.064	.038	.056	.037	.023	.018	.012	.007	
5.0	.155	.096	.051	.133	.083	.045	.092	.058	.032	.053	.034	.019	.017	.011	.006	
6.0	.148	.087	.044	.127	.076	.038	.088	.053	.027	.051	.031	.016	.016	.010	.005	
7.0	.141	.080	.038	.121	.070	.033	.084	.049	.023	.049	.029	.014	.016	.009	.005	
8.0	.135	.075	.033	.116	.065	.029	.080	.045	.021	.047	.027	.012	.015	.009	.004	
9.0	.129	.070	.030	.111	.060	.026	.077	.042	.018	.045	.025	.011	.014	.008	.004	
10.0	.123	.065	.027	.106	.057	.024	.073	.040	.017	.043	.024	.010	.014	.008	.003	

C Range: 0 - 360DEG
 C Interval: 22.5DEG
 Test Speed: HIGH
 Temperature:25.3DEG
 Test Date:2020-11-24

γ Range: 0 - 180DEG
 γ Interval: 1.0DEG
 Test System:EVERFINE GO-2000B_V1 SYSTEM V2.0.351
 Humidity:65.0%
 Test Distance:9.660m [K=1.0000]
 Remarks:

UGR(Unified Glare Rating) Table

Test:U:23.95V I:0.0536A P:1.284W PF:1.000 Lamp Flux:66.9237x1 lm										
NAME: UB-SNA-DW183090C (1800K)					TYPE: LED Strip			WEIGHT: 0.01 Kg		
SPEC.: 11W					DIM.:1000*10*2 (MM)			SERIAL No.: 001		
MFR.: Flexfire LEDs, Inc.					SUR.:1000*10 (MM)			Shielding Angle:120		
ceiling/cavity	0.7	0.7	0.5	0.5	0.3	0.7	0.7	0.5	0.5	0.3
walls	0.5	0.3	0.5	0.3	0.3	0.5	0.3	0.5	0.3	0.3
working plane	0.2	0.2	0.2	0.2	0.2	0.2	0.2	0.2	0.2	0.2
Room dimensions	Viewed crosswise					Viewed endwise				
x = 2H y = 2H	37.2	38.7	37.5	38.9	39.2	37.1	38.6	37.4	38.8	39.1
3H	38.8	40.3	39.1	40.5	40.8	38.7	40.1	39.0	40.4	40.6
4H	39.5	40.9	39.8	41.1	41.4	39.3	40.7	39.6	40.9	41.2
6H	40.0	41.3	40.3	41.6	41.9	39.8	41.1	40.1	41.3	41.6
8H	40.1	41.4	40.5	41.7	42.0	39.9	41.2	40.3	41.5	41.8
12H	40.2	41.4	40.6	41.7	42.1	40.0	41.2	40.4	41.5	41.8
4H 2H	37.8	39.2	38.1	39.4	39.7	37.7	39.1	38.1	39.4	39.6
3H	39.6	40.8	40.0	41.1	41.4	39.5	40.7	39.9	41.0	41.3
4H	40.4	41.5	40.8	41.8	42.2	40.3	41.4	40.7	41.7	42.0
6H	41.0	42.0	41.4	42.4	42.8	40.8	41.8	41.3	42.2	42.6
8H	41.2	42.1	41.7	42.5	42.9	41.0	41.9	41.5	42.3	42.7
12H	41.4	42.2	41.8	42.6	43.0	41.2	42.0	41.6	42.4	42.8
8H 4H	40.7	41.6	41.1	42.0	42.4	40.6	41.5	41.0	41.8	42.2
6H	41.5	42.2	41.9	42.6	43.1	41.3	42.0	41.7	42.5	42.9
8H	41.7	42.4	42.2	42.8	43.3	41.6	42.2	42.0	42.7	43.1
12H	41.9	42.5	42.4	43.0	43.5	41.8	42.4	42.3	42.8	43.3
12H 4H	40.7	41.5	41.1	41.9	42.4	40.6	41.4	41.0	41.8	42.2
6H	41.5	42.2	42.0	42.6	43.1	41.4	42.0	41.8	42.5	42.9
8H	41.8	42.4	42.3	42.9	43.4	41.7	42.2	42.2	42.7	43.2
Variations with the observer position at spacings:										
S = 1.0H	+ 0.1 / - 0.2					+ 0.1 / - 0.2				
1.5H	+ 0.2 / - 0.3					+ 0.2 / - 0.3				
2.0H	+ 0.2 / - 0.3					+ 0.2 / - 0.3				

CIE Pub.117 Corrected 66.92 lm Total Lamp Luminous Flux. (8log(F/F0) = -9.4)

C Range: 0 - 360DEG
 C Interval: 22.5DEG
 Test Speed: HIGH
 Temperature:25.3DEG
 Test Date:2020-11-24

γ Range: 0 - 180DEG
 γ Interval: 1.0DEG
 Test System:EVERFINE GO-2000B_V1 SYSTEM V2.0.351
 Humidity:65.0%
 Test Distance:9.660m [K=1.0000]
 Remarks:

UTILIZATION FACTORS TABLE

Test:U:23.95V I:0.0536A P:1.284W PF:1.000 Lamp Flux:66.9237x1 lm		
NAME: UB-SNA-DW183090C (1800K)	TYPE: LED Strip	WEIGHT: 0.01 Kg
SPEC.: 11W	DIM.:1000*10*2 (MM)	SERIAL No.: 001
MFR.: Flexfire LEDs, Inc.	SUR.:1000*10 (MM)	Shielding Angle:120

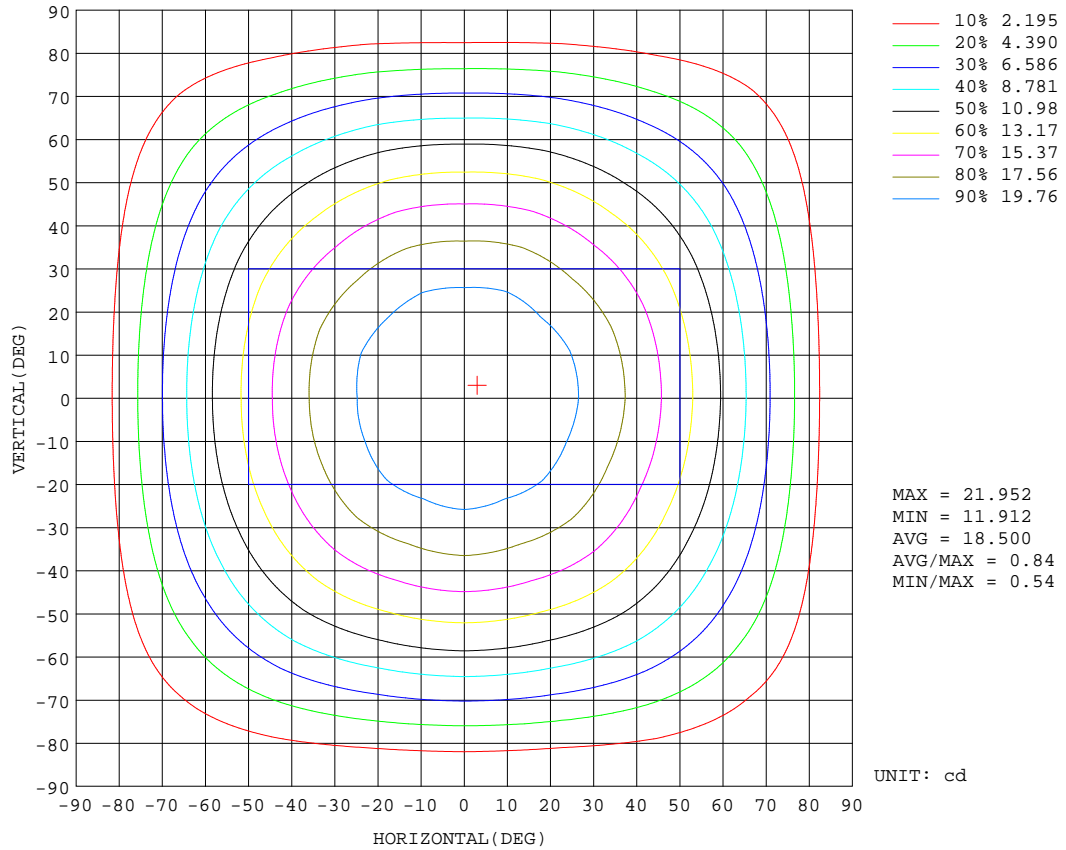
REFLECTANCE										
Ceiling	0.8	0.8	0.8	0.7	0.7	0.7	0.5	0.5	0.5	0
Walls	0.7	0.5	0.3	0.7	0.5	0.3	0.7	0.5	0.3	0
Working plane	0.2	0.2	0.2	0.2	0.2	0.2	0.2	0.2	0.2	0
ROOM INDEX	UTILIZATION FACTORS(PERCENT) $k(RI) \times RCR = 5$									
k = 0.60	56	44	37	56	44	37	54	44	37	31
0.80	66	54	47	65	54	47	63	53	46	39
1.00	75	63	56	73	63	56	71	64	55	48
1.25	82	71	64	80	70	63	78	69	62	55
1.50	87	77	70	85	76	69	82	74	68	60
2.00	94	85	78	92	84	78	88	82	76	68
2.50	98	90	84	96	89	83	92	86	81	72
3.00	101	94	89	99	93	87	95	90	85	76
4.00	106	100	95	103	98	93	99	94	91	81
5.00	108	103	99	106	101	97	101	97	94	85
ROOM INDEX	UF(total)									Direct
According to DIN EN 13032-2 2004			Suspended				SHRNOM = 1.25			

C Range: 0 - 360DEG
 C Interval: 22.5DEG
 Test Speed: HIGH
 Temperature:25.3DEG
 Test Date:2020-11-24

γ Range: 0 - 180DEG
 γ Interval: 1.0DEG
 Test System:EVERFINE GO-2000B_V1 SYSTEM V2.0.351
 Humidity:65.0%
 Test Distance:9.660m [K=1.0000]
 Remarks:

ISOCANDELA DIAGRAM

Test:U:23.95V I:0.0536A P:1.284W PF:1.000 Lamp Flux:66.9237x1 lm		
NAME: UB-SNA-DW183090C (1800K)	TYPE: LED Strip	WEIGHT: 0.01 Kg
SPEC.: 11W	DIM.:1000*10*2 (MM)	SERIAL No.: 001
MFR.: Flexfire LEDs, Inc.	SUR.:1000*10 (MM)	Shielding Angle:120

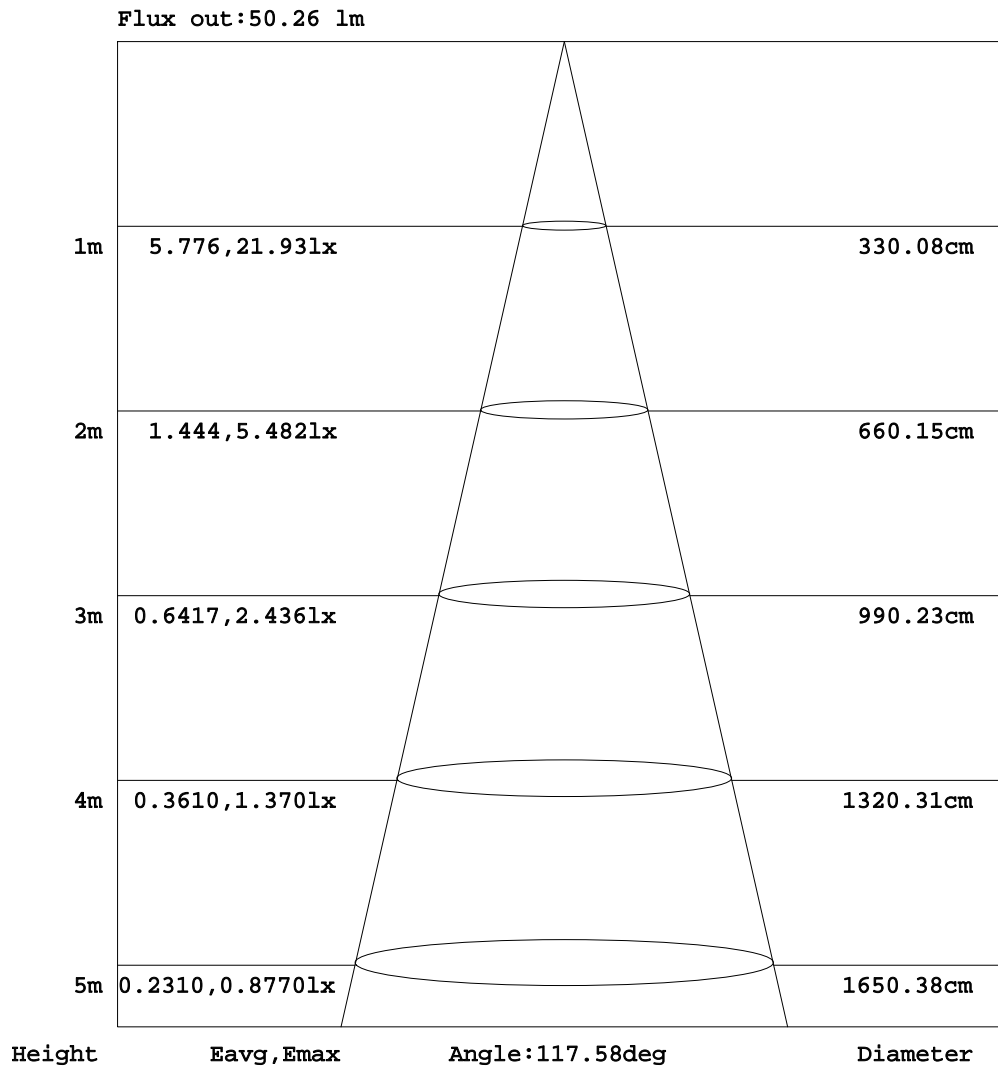


C Range: 0 - 360DEG
 C Interval: 22.5DEG
 Test Speed: HIGH
 Temperature:25.3DEG
 Test Date:2020-11-24

γ Range: 0 - 180DEG
 γ Interval: 1.0DEG
 Test System:EVERFINE GO-2000B_V1 SYSTEM V2.0.351
 Humidity:65.0%
 Test Distance:9.660m [K=1.0000]
 Remarks:

AAI Figure

Test:U:23.95V I:0.0536A P:1.284W PF:1.000 Lamp Flux:66.9237x1 lm		
NAME: UB-SNA-DW183090C (1800K)	TYPE: LED Strip	WEIGHT: 0.01 Kg
SPEC.: 11W	DIM.:1000*10*2 (MM)	SERIAL No.: 001
MFR.: Flexfire LEDs, Inc.	SUR.:1000*10 (MM)	Shielding Angle:120



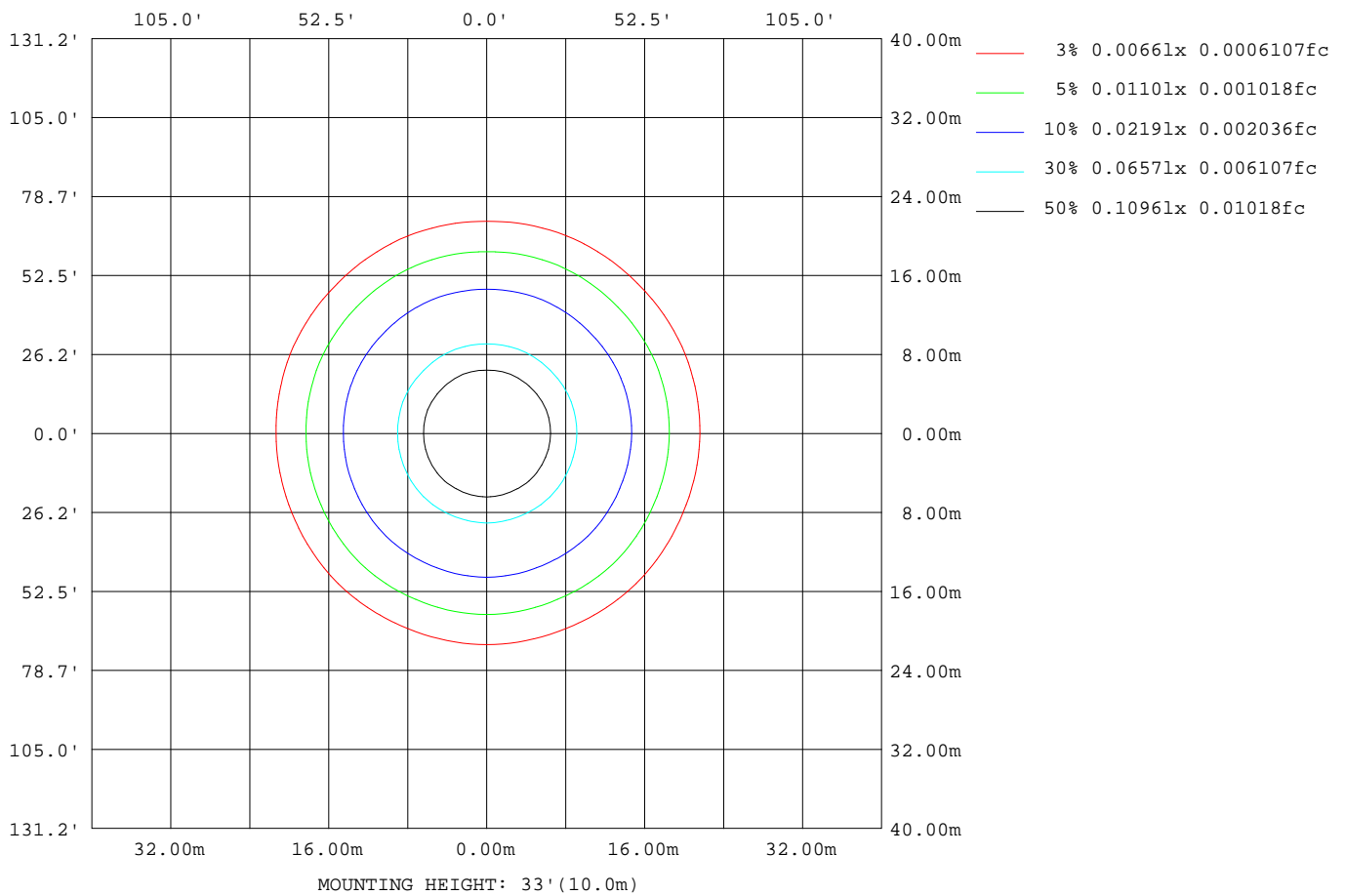
Note:The Curves indicate the illuminated area and the average illumination when the luminaire is at different distance.

C Range: 0 - 360DEG
 C Interval: 22.5DEG
 Test Speed: HIGH
 Temperature:25.3DEG
 Test Date:2020-11-24

γ Range: 0 - 180DEG
 γ Interval: 1.0DEG
 Test System:EVERFINE GO-2000B_V1 SYSTEM V2.0.351
 Humidity:65.0%
 Test Distance:9.660m [K=1.0000]
 Remarks:

ISOLUX DIAGRAM

Test:U:23.95V I:0.0536A P:1.284W PF:1.000 Lamp Flux:66.9237x1 lm		
NAME: UB-SNA-DW183090C (1800K)	TYPE: LED Strip	WEIGHT: 0.01 Kg
SPEC.: 11W	DIM.:1000*10*2 (MM)	SERIAL No.: 001
MFR.: Flexfire LEDs, Inc.	SUR.:1000*10 (MM)	Shielding Angle:120



C Range: 0 - 360DEG
 C Interval: 22.5DEG
 Test Speed: HIGH
 Temperature:25.3DEG
 Test Date:2020-11-24

γ Range: 0 - 180DEG
 γ Interval: 1.0DEG
 Test System:EVERFINE GO-2000B_V1 SYSTEM V2.0.351
 Humidity:65.0%
 Test Distance:9.660m [K=1.0000]
 Remarks:

LED Avg.L Report

Test:U:23.95V I:0.0536A P:1.284W PF:1.000 Lamp Flux:66.9237x1 lm		
NAME: UB-SNA-DW183090C (1800K)	TYPE: LED Strip	WEIGHT: 0.01 Kg
SPEC.: 11W	DIM.:1000*10*2 (MM)	SERIAL No.: 001
MFR.: Flexfire LEDs, Inc.	SUR.:1000*10 (MM)	Shielding Angle:120

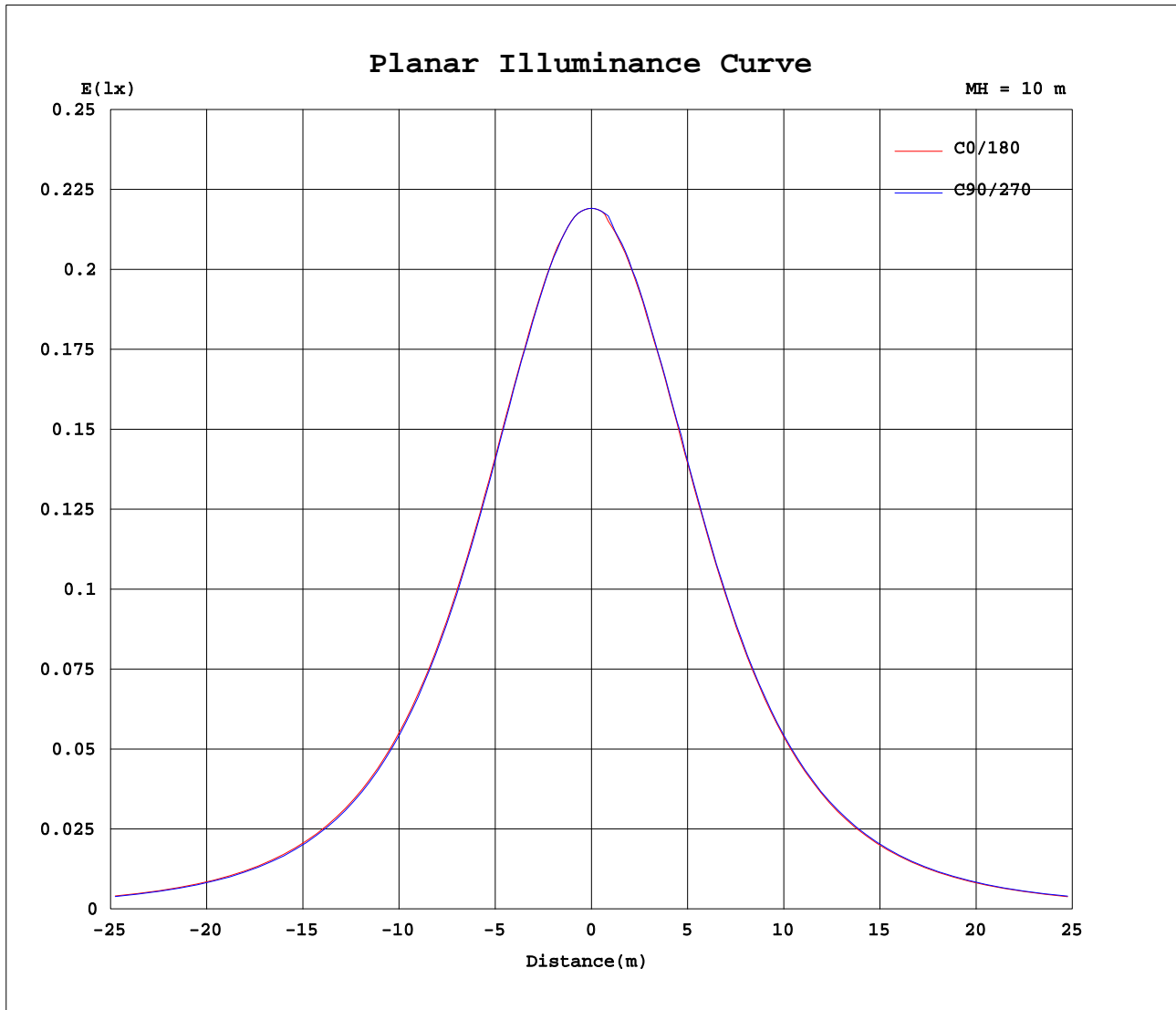
AvgL	cd/m2
L_0~180(65)av	1032354
L_0~180(75)av	933113
L_0~180(85)av	688322
L_90~270(65)av	1027873
L_90~270(75)av	936073
L_90~270(85)av	779868
L_45(65)av	1031206
L_45(75)av	931735
L_45(85)av	748932

Standard: GB/T 29293-2012

C Range: 0 - 360DEG
 C Interval: 22.5DEG
 Test Speed: HIGH
 Temperature:25.3DEG
 Test Date:2020-11-24

γ Range: 0 - 180DEG
 γ Interval: 1.0DEG
 Test System:EVERFINE GO-2000B_V1 SYSTEM V2.0.351
 Humidity:65.0%
 Test Distance:9.660m [K=1.0000]
 Remarks:

Planar Illuminance Curve



C Range: 0 - 360DEG
 C Interval: 22.5DEG
 Test Speed: HIGH
 Temperature: 25.3DEG
 Test Date: 2020-11-24

γ Range: 0 - 180DEG
 γ Interval: 1.0DEG
 Test System: EVERFINE GO-2000B_V1 SYSTEM V2.0.351
 Humidity: 65.0%
 Test Distance: 9.660m [K=1.0000]
 Remarks:

LUMINOUS DISTRIBUTION INTENSITY DATA

Test:U:23.95V I:0.0536A P:1.284W PF:1.000 Lamp Flux:66.9237x1 lm		
NAME: UB-SNA-DW183090C (1800K)	TYPE: LED Strip	WEIGHT: 0.01 Kg
SPEC.: 11W	DIM.:1000*10*2 (MM)	SERIAL No.: 001
MFR.: Flexfire LEDs, Inc.	SUR.:1000*10 (MM)	Shielding Angle:120

Table--1

UNIT: cd

C(DEG) γ (DEG)	0	22.5	45	67.5	90	112.5	135	157.5	180	202.5	225	247.5	270	292.5	315	337.5			
0	21.9	21.9	21.9	21.9	21.9	21.9	21.9	21.9	21.9	21.9	21.9	21.9	21.9	21.9	21.9	21.9			
5	21.9	21.9	21.9	21.9	21.9	21.9	21.9	21.9	21.8	21.9	21.9	21.9	21.9	21.9	21.9	21.9			
10	21.7	21.5	21.6	21.5	21.6	21.5	21.6	21.5	21.5	21.6	21.5	21.7	21.5	21.6	21.6	21.7			
15	21.3	21.1	21.2	21.1	21.2	21.1	21.2	21.1	21.1	21.2	21.1	21.2	21.1	21.2	21.1	21.3			
20	20.7	20.5	20.7	20.5	20.7	20.5	20.6	20.5	20.5	20.7	20.5	20.7	20.5	20.7	20.6	20.7			
25	20.0	20.0	19.9	19.8	19.9	19.8	19.9	19.7	19.7	19.9	19.9	20.0	19.9	20.0	19.9	20.0			
30	19.1	18.9	19.0	18.9	19.0	18.9	19.0	18.9	18.9	19.0	18.9	19.0	19.0	19.1	19.0	19.2			
35	18.1	18.0	18.0	17.8	17.9	17.8	17.9	17.8	17.8	18.0	17.8	18.0	17.9	18.0	17.9	18.1			
40	16.9	16.7	16.8	16.6	16.7	16.5	16.7	16.6	16.6	16.8	16.7	16.8	16.7	16.8	16.8	16.9			
45	15.6	15.4	15.4	15.3	15.3	15.3	15.3	15.3	15.2	15.4	15.3	15.5	15.4	15.5	15.4	15.6			
50	14.1	13.9	13.9	13.8	13.8	13.8	13.8	13.8	13.8	13.9	13.9	14.0	13.9	14.0	14.0	14.1			
55	12.5	12.3	12.3	12.1	12.2	12.1	12.2	12.1	12.1	12.4	12.2	12.4	12.3	12.4	12.4	12.6			
60	10.8	10.6	10.6	10.4	10.5	10.4	10.5	10.4	10.4	10.6	10.5	10.7	10.6	10.7	10.6	10.8			
65	8.92	8.69	8.72	8.52	8.62	8.51	8.63	8.50	8.53	8.74	8.68	8.84	8.76	8.91	8.84	8.99			
70	6.98	6.78	6.76	6.63	6.69	6.58	6.67	6.52	6.57	6.77	6.80	6.94	6.88	6.97	6.93	7.05			
75	5.03	4.85	4.80	4.66	4.76	4.67	4.72	4.60	4.63	4.84	4.84	5.02	4.93	5.04	4.93	5.09			
80	3.09	2.87	2.92	2.76	2.86	2.79	2.84	2.73	2.75	2.94	2.90	3.10	3.06	3.16	3.08	3.16			
85	1.28	1.09	1.28	1.18	1.31	1.20	1.25	1.14	1.12	1.33	1.29	1.48	1.41	1.55	1.41	1.51			
90	0.15	0.15	0.32	0.20	0.37	0.23	0.35	0.23	0.14	0.31	0.23	0.43	0.35	0.50	0.32	0.38			
95	0.05	0.06	0.11	0.05	0.09	0.05	0.11	0.05	0.06	0.09	0.06	0.12	0.05	0.12	0.05	0.08			
100	0.05	0.06	0.06	0.06	0.06	0.05	0.06	0.05	0.06	0.06	0.06	0.06	0.06	0.06	0.06	0.05			
105	0.05	0.06	0.06	0.06	0.06	0.06	0.06	0.05	0.08	0.06	0.06	0.06	0.06	0.06	0.06	0.05			
110	0.05	0.06	0.06	0.06	0.06	0.06	0.06	0.05	0.09	0.06	0.06	0.06	0.06	0.06	0.06	0.05			
115	0.05	0.06	0.06	0.06	0.00	0.06	0.06	0.05	0.09	0.06	0.06	0.06	0.06	0.06	0.06	0.05			
120	0.05	0.06	0.06	0.06	0.00	0.06	0.06	0.05	0.11	0.06	0.06	0.06	0.06	0.06	0.06	0.05			
125	0.05	0.06	0.06	0.06	0.00	0.06	0.06	0.05	0.11	0.06	0.06	0.06	0.06	0.06	0.06	0.05			
130	0.06	0.06	0.06	0.06	0.00	0.06	0.06	0.05	0.11	0.06	0.06	0.06	0.06	0.06	0.06	0.05			
135	0.12	0.06	0.06	0.06	0.00	0.06	0.06	0.05	0.11	0.06	0.06	0.06	0.06	0.06	0.06	0.05			
140	0.12	0.06	0.06	0.06	0.00	0.06	0.06	0.05	0.11	0.06	0.06	0.06	0.06	0.06	0.06	0.05			
145	0.12	0.06	0.06	0.06	0.02	0.06	0.06	0.05	0.11	0.06	0.06	0.06	0.06	0.06	0.06	0.05			
150	0.03	0.06	0.06	0.06	0.02	0.05	0.06	0.05	0.11	0.06	0.06	0.06	0.06	0.06	0.06	0.05			
155	0.03	0.06	0.06	0.06	0.02	0.05	0.06	0.05	0.11	0.06	0.06	0.06	0.06	0.06	0.06	0.05			
160	0.03	0.06	0.06	0.06	0.02	0.05	0.06	0.05	0.11	0.06	0.06	0.06	0.06	0.06	0.06	0.05			
165	0.03	0.06	0.06	0.06	0.03	0.05	0.06	0.05	0.11	0.06	0.06	0.06	0.06	0.06	0.06	0.05			
170	0.05	0.06	0.06	0.06	0.05	0.05	0.06	0.05	0.11	0.06	0.06	0.06	0.06	0.05	0.06	0.05			
175	0.05	0.06	0.06	0.06	0.05	0.05	0.06	0.05	0.11	0.06	0.06	0.06	0.06	0.05	0.06	0.05			
180	0.05	0.06	0.06	0.06	0.05	0.05	0.03	0.05	0.11	0.06	0.06	0.06	0.06	0.06	0.06	0.05			

C Range: 0 - 360DEG
 C Interval: 22.5DEG
 Test Speed: HIGH
 Temperature:25.3DEG
 Test Date:2020-11-24

γ Range: 0 - 180DEG
 γ Interval: 1.0DEG
 Test System:EVERFINE GO-2000B_V1 SYSTEM V2.0.351
 Humidity:65.0%
 Test Distance:9.660m [K=1.0000]
 Remarks: