




UltraBright™
Architectural Series
LED Strip Light

Product Data Sheet

 Please read all instructions carefully before installation.

Description

Our UltraBright™ Architectural Series is an excellent choice to meet the demand of architectural design and innovative lighting projects. We designed this LED strip with the market’s leading components for incredibly brilliant luminance (502 lm/ft), excellent color rendering and longer run lengths. This product is often paired with a variety of dimming options to allow its use in most applications, from high brightness to comfortable accents.

15 Year
Warranty



Title 24 is regulated for lamps with color temperatures 4000K and below

Product Features

CRI	High CRI of up to 98
R9 and R13 Values	High R9 (98) & R13 (100) values
Lumens	Up to 502 lm/ft (1,646 lm/m)
Efficacy	Up to 116 lm/W
Voltage	12V and 24V DC Input
LEDs/Foot	49 LEDs/Foot (160/m)
Beam Angle	120° Beam Angle
Ambient Temp	-4°F to 113°F (-20°C to 45°C)
PCB	4 oz copper PCB
LED Pitch	1/4" (6.3 mm)
Strip Width	3/8" (10 mm)
Cutting Points 12V	1" (25 mm)
Cutting Points 24V	2" (51 mm)
Max Run Length in Series 12V	16 ft (5 m)
Max Run Length in Series 24V	42 ft (13 m)
LED Size	3014
Adhesive Type	3M VHB 4930 tape (IP20)
Dimmable	Yes



Product Specifications

Product SKU	Color* (CCT)	Watts / Foot (Meter)	Lumen / Foot (Meter)	Luminous Efficacy (Lumens / Watt)	CRI	Gamut Score Rg (Color Sat.)	Relative Fidelity Score (RF)	TLCI (Qa)	CQS
UB-AS-27K90C	2700K	4.4 W/ft (14.4 W/m)	466 lm/ft (1,528 lm/m)	104	98	101	95	97	96
UB-AS-30K90C	3000K	4.4 W/ft (14.4 W/m)	478 lm/ft (1,567 lm/m)	108	94	100	92	94	93
UB-AS-35K90C	3500K	4.4 W/ft (14.4 W/m)	499 lm/ft (1,636 lm/m)	112	95	100	92	95	93
UB-AS-40K90C	4000K	4.4 W/ft (14.4 W/m)	493 lm/ft (1,616 lm/m)	114	97	99	92	98	95
UB-AS-50K90C	5000K	4.4 W/ft (14.4 W/m)	502 lm/ft (1,646 lm/m)	116	95	98	91	96	92

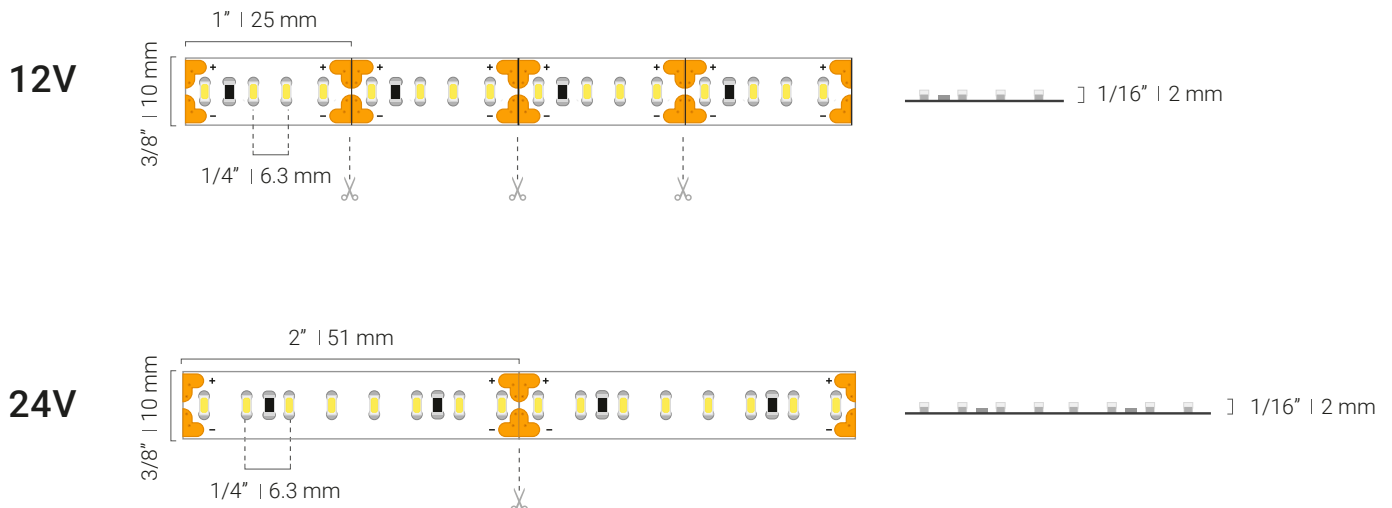
*CCT may be +/-100K but always ordered from same bin and will present no noticeable differences perceived by the human eye

Ordering Code

Brand	Series	CCT	Voltage	Length
<div style="border: 1px solid black; width: 100px; height: 20px; margin: 0 auto;"></div> <p>UB - UltraBright</p>	<div style="border: 1px solid black; width: 100px; height: 20px; margin: 0 auto;"></div> <p>AS - Architectural™ Series</p>	<div style="border: 1px solid black; width: 150px; height: 20px; margin: 0 auto;"></div> <p>27K90C - 2700K/90+ CRI 30K90C - 3000K/90+ CRI 35K90C - 3500K/90+ CRI 40K90C - 4000K/90+ CRI 50K90C - 5000K/90+ CRI</p>	<div style="border: 1px solid black; width: 100px; height: 20px; margin: 0 auto;"></div> <p>12V 24V</p>	<div style="border: 1px solid black; width: 100px; height: 20px; margin: 0 auto;"></div> <p>16FT - 16.4 ft Reel 32FT - 32.8 ft Reel 98FT - 98.4 ft Reel *</p>

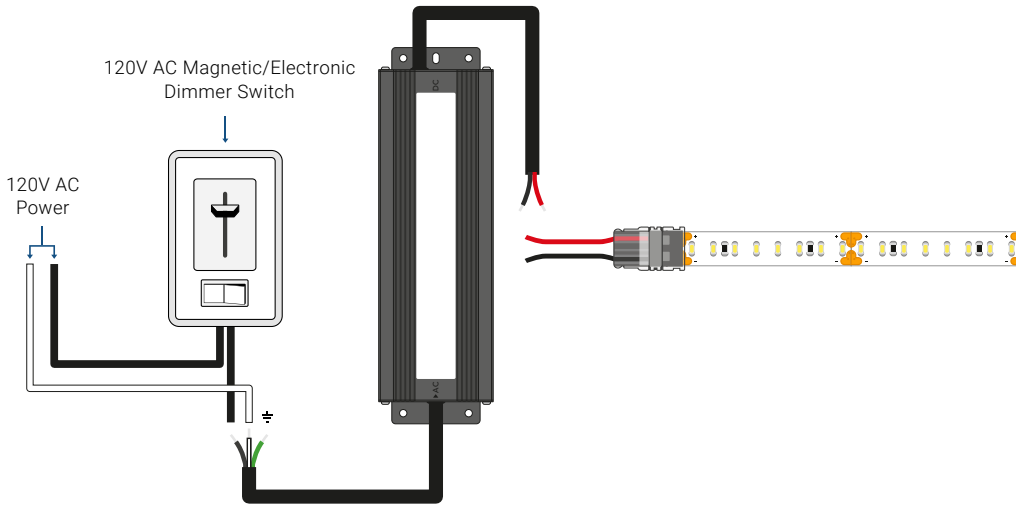
*Only available in 24V

Dimensions



Dimming Options

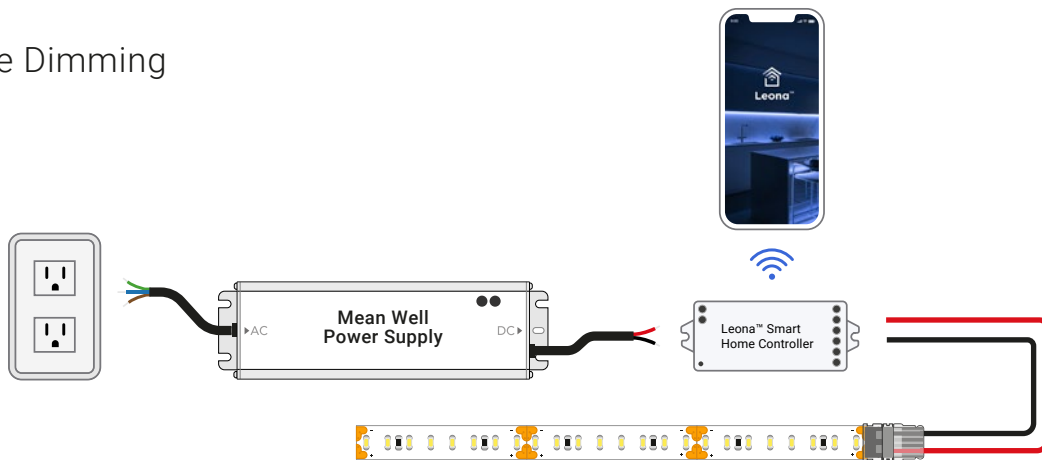
Lutron Style Wall Dimmer



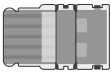



Input		
Color	Symbol	Type
Green	\perp	Ground Wire
Black	L	Line (hot)
White	N	Neutral

Output		
Color	Symbol	Type
Black	-	Negative
Red	+	Positive

In-Line Dimming



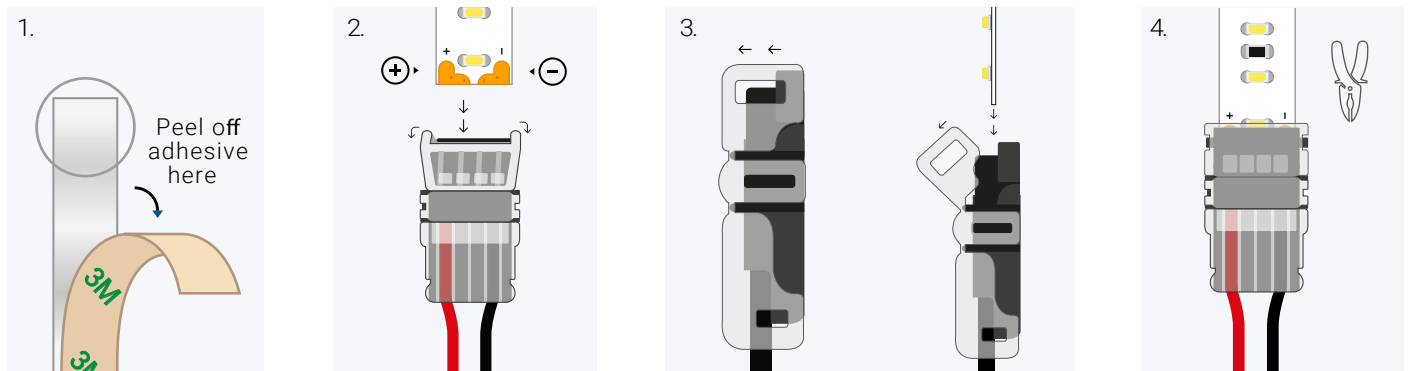
Strip Light Connectors

SKU	Description	Wire Gauge	Amperage** Limit	Diagram
GRIP-SC-C1-10-0*	Attaches LED strip directly to a Power Supply/Driver, low voltage control or DC source.	20 AWG	5 Amps	
GRIP-SC-C1-10-12* GRIP-SC-C1-10-36*	Attaches LED strip directly to a Power Supply/Driver, low voltage control or DC source.	20 AWG		
GRIP-SC-C2-10-06*	Attaches two sections of LED strip together. Wire lead allows for turns around tight corners.	20 AWG		
GRIP-SC-C3-10-0*	Attaches two sections of LED strip together in a continuous run.	-		

*Calculate max length of LED strip to follow the solderless connector based on an amperage draw of 0.36 A/ft (1.2 A/m) at 12 volts, and 0.18 amps per foot (0.6 A/m) at 24 volts.

**Be sure no more than 5 amps is drawn after any solderless connector.

Solderless Connection Guide



1. Remove 1/4" of 3M adhesive tape on the back from the end of the strip that you want to connect. It must be removed to allow it to fit properly with the solderless connector. (See Diagram 1)

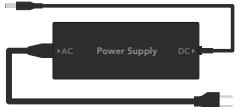
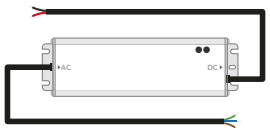
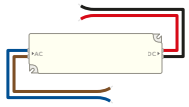

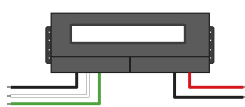
2. Double check the polarity of the strip to match the positive (+) markings together and negative (-) markings together. If you accidentally close the connector before you're ready, you can use a small flathead screwdriver to pry the top back open. (See Diagram 2)

3. Open the top of the grip connector and insert the LED strip inside. Make sure the LED strip is facing up towards the translucent top and the solder pads are directly above the small hooks on the connector. (See Diagram 3)

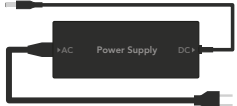
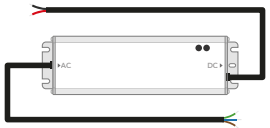
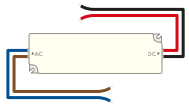

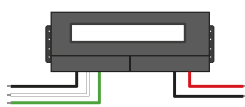

4. Once everything is in order, use pliers to close and lock the connector. You'll hear a "click" sound when it is properly closed. (See Diagram 4)

NOTE: Soldering is the preferred method. If you need further assistance, please download our Solderless Connector Installation Guide from our website.

Compatible Drivers (12V)

	Power Supply	LED Strip Length	Product SKU	Diagram	
Non-dimmable	Plug-In Power Supply	1 - 2 ft	12V-WMPS2-1		
		3 - 4 ft	12V-DPS2-2		
		5 - 8 ft	12V-DPS2-4		
		9 - 13 ft	12V-DPS2-6		
		14 - 17 ft	12V-DPS2-8		
	Mean Well™ HLG		1 - 8 ft	HLG-40H-12A	
			9 - 12 ft	HLG-80H-12A	
			13 - 24 ft	HLG-120H-12A	
			25 - 30 ft	HLG-150H-12A	
			31 - 39 ft	HLG-240H-12A	
			40 - 54 ft	HLG-320H-12A	
			55 - 98 ft	HLG-600H-12A	
	Mean Well™ LPV		1 - 4 ft	LPV-20-12	
			5 - 7 ft	LPV-35-12	
			8 - 12 ft	LPV-60-12	
		13 - 20 ft	LPV-100-12		
Dimmable	Zurik® EMLV	1 - 6 ft	ZRK-EMLV2-30W-12VDC		
		7 - 12 ft	ZRK-EMLV2-60W-12VDC		
		13 - 24 ft	ZRK-EMLV2-120W-12VDC-J		
		25 - 40 ft	ZRK-EMLV2-200W-12VDC-J		
		41 - 61 ft	ZRK-EMLV2-300W-12VDC-J		
	Zurik® Universal		1 - 11 ft	ZRK-UNV-60W-12VDC	
			12 - 22 ft	ZRK-UNV-120W-12VDC	
			23 - 40 ft	ZRK-UNV-200W-12VDC	
			41 - 62 ft	ZRK-UNV-300W-12VDC	
			1 - 36 ft	ZRK-UNV-C180W-12VDC	
	37 - 62 ft	ZRK-UNV-C300W-12VDC			

Compatible Drivers (24V)

	Power Supply	LED Strip Length	Product SKU	Diagram	
Non-dimmable	Plug-In Power Supply	1 - 4 ft	24V-WMPS2-1		
		5 - 11 ft	24V-DPS2-2.5		
		12 - 18 ft	24V-DPS2-4		
		19 - 22 ft	24V-DPS2-5		
	Mean Well™ HLG		1 - 8 ft	HLG-40H-24A	
			9 - 12 ft	HLG-60H-24A	
			13 - 20 ft	HLG-100H-24A	
			21 - 25 ft	HLG-120H-24A	
			26 - 38 ft	HLG-185H-24A	
			39 - 49 ft	HLG-240H-24A	
		50 - 65 ft	HLG-320H-24A		
	66 - 123 ft	HLG-600H-24A			
Mean Well™ LPV		1 - 4 ft	LPV-20-24		
		5 - 7 ft	LPV-35-24		
		8 - 12 ft	LPV-60-24		
Zurik® EMLV		1 - 6 ft	ZRK-EMLV2-30W-24VDC		
		7 - 12 ft	ZRK-EMLV2-60W-24VDC		
		13 - 20 ft	ZRK-EMLV2-96W-24VDC-J		
		21 - 25 ft	ZRK-EMLV2-120W-24VDC-J		
		26 - 41 ft	ZRK-EMLV2-200W-24VDC-J		
		42 - 61 ft	ZRK-EMLV2-300W-24VDC-J		
Zurik® Universal		1 - 11 ft	ZRK-UNV-60W-24VDC		
		12 - 18 ft	ZRK-UNV-96W-24VDC		
		19 - 22 ft	ZRK-UNV-120W-24VDC		
		23 - 40 ft	ZRK-UNV-200W-24VDC		
		41 - 62 ft	ZRK-UNV-300W-24VDC		
		1 - 38 ft	ZRK-UNV-C192W-24VDC		
		39 - 79 ft	ZRK-UNV-C384W-24VDC		
Lutron® Hi-Lume™ Premier	0.1% Constant Voltage Driver	1 - 21 ft	L3D0-96W24V-U		
Dimming Range:		0.1-100%			
Description:		Hi-Lume Premier 0.1% EcoSystem 24V constant voltage LED driver with Soft-on, Fade-to-Black dimming technology			

Compatible Aluminum Extrusions

Name	Type	Included Accessories	Covers	Kit SKU	Mockup
Ion™	Surface Mount	-	-	ION-CH-A-1M	
Gemini™	Surface Mount	2 Open End Caps 2 Closed End Caps 4 Metal Mounting Clips	Clear Cover, 1 m (3' 3/8") Frosted Cover, 1 m (3' 3/8") Matte Cover 1, m (3' 3/8")	GEM-CH-A-CVR-C-1M GEM-CH-A-CVR-F-1M GEM-CH-A-CVR-M-1M	
Nova™	Surface Mount	2 Open End Caps 2 Closed End Caps 4 Metal Mounting Clips	Clear Round Cover, 1 m (3' 3/8") Clear Square, 1 m (3' 3/8") Matte Round Cover, 1 m (3' 3/8") Matte Square Cover, 1 m (3' 3/8")	NOV-CH-A-CVR-C-RD-1M NOV-CH-A-CVR-C-SQ-1M NOV-CH-A-CVR-M-RD-1M NOV-CH-A-CVR-M-SQ-1M	
Titan™	Surface Mount	2 Open End Caps 2 Closed End Caps 4 Metal Mounting Clips	Clear Cover, 1 m (3' 3/8") Frosted Cover, 1 m (3' 3/8") Matte Cover, 1 m (3' 3/8")	TTN-CH-A-CVR-C-1M TTN-CH-A-CVR-F-1M TTN-CH-A-CVR-M-1M	
Kepler™	Surface Mount	2 Open End Caps 2 Closed End Caps 4 Metal Mounting Clips	Clear Cover, 1 m (3' 3/8") Frosted Cover, 1 m (3' 3/8") Matte Cover, 1 m (3' 3/8")	KEP-CH-A-CVR-C-1M KEP-CH-A-CVR-F-1M KEP-CH-A-CVR-M-1M	
		Note: This extrusion only fits the Architectural™ Series LED strip without connectors.			
Laika™	Surface Mount	2 Open End Caps 2 Closed End Caps 4 Metal Mounting Clips	Clear Cover, 1 m (3' 3/8") Frosted Cover, 1 m (3' 3/8")	LAI-CH-A-CVR-C-1M LAI-CH-A-CVR-F-1M	
		Note: This extrusion only fits the Architectural™ Series LED strip without connectors.			
Atlas™	Angled Mount	2 Open End Caps 2 Closed End Caps 4 Metal Mounting Clips	Clear Cover, 1 m (3' 3/8") Frosted Cover, 1 m (3' 3/8") Matte Cover, 1 m (3' 3/8")	ATL-CH-A-CVR-C-1M ATL-CH-A-CVR-F-1M ATL-CH-A-CVR-M-1M	
Calypso™	Recessed Mount	2 Open End Caps 2 Closed End Caps 4 Metal Mounting Clips	Frosted Cover, 1 m (3' 3/8") Matte Cover, 1 m (3' 3/8")	CAL-CH-A-CVR-F-1M CAL-CH-A-CVR-M-1M	
Cassini™	Recessed Mount	2 Open End Caps 2 Closed End Caps 4 Metal Mounting Clips	Clear Cover, 1 m (3' 3/8") Frosted Cover, 1 m (3' 3/8") Matte Cover, 1 m (3' 3/8")	CAS-CH-A-CVR-C-1M CAS-CH-A-CVR-F-1M CAS-CH-A-CVR-M-1M	
Phoenix™	Recessed Mount	2 Open End Caps 2 Closed End Caps 4 Metal Mounting Clips	Frosted Cover, 1 m (3' 3/8") Matte Cover, 1 m (3' 3/8")	PHO-CH-A-CVR-F-1M PHO-CH-A-CVR-M-1M	

Safety And Disclosures

1. Installation must be in accordance with local and national electrical code regulations.
2. To ensure safety and correct installation, our strips are intended to be installed by a qualified, licensed electrician.
3. Only install with a Class 2 DC Constant Voltage LED driver to meet UL requirements.
4. Do not install in an environment where excessive heat may exist.
5. LED strip lights must be handled with care. Excessive handling, bending, and pressure may damage the product, voiding the warranty.
6. Do not secure this product with any kind of staples, nails, or materials that could potentially damage the product in any way. Keep these instructions for future reference.
7. Do not cover this product with any kind of combustible material such as paper, fabrics, etc.
8. Each maximum run requires a dedicated power feed from the driver. Do not extend beyond the recommended maximum run length.
9. Make sure the appropriate gauge wire is installed between the driver, LEDs, and any dimmers. When choosing wire, calculate voltage drop, maximum amperage rating, and the location ratings on the wire. Improper wire selection and installation could overheat wires, and cause fire.
10. Do not modify the product beyond instructions or warranty will be void.
11. We reserve the right to modify and improve the design of our fixtures without prior notice. Although we try our best to order the same colors every time, due to changes in technology and phosphors over time, we cannot guarantee to match existing installed fixtures for subsequent orders or replacements in regards to product appearance, CCT, or lumen output.
12. Do not install product with the majority of the product unsupported. Allowing the product to be suspended or dangling while installing may cause damage to the PCB due to the weight of the strip and/or spool.

Warranty Information

Limited Warranty

This product has a 15 year limited warranty from the date of shipment. This warranty only includes the main product outlined in this specification sheet and does not include the additional accessories that are used as a reference. Complete warranty details for fixtures and additional accessories are available at <https://www.flexfireleds.com/warranties/> within the Policies section. For warranty related questions please contact the product support team at (support@flexfireleds.com).

Consumer's Acknowledgment

Flexfire LEDs, Inc. stands behind its products when they are used properly and according to our specifications. When you purchase our products, you are agreeing to the terms and conditions outlined in our warranty section. We try our best to make recommendations, but the burden of proper installation, design, and maintenance relies on the purchaser. This limited warranty does not include product failures that are the result of: Not using a voltage regulated power supply to connect the LED product or controls; Connecting LED products to the wrong output voltage; Improper connection of power supplies, LED products, or controls; Connecting LED products or controls directly to any AC power source if they are stated for DC only input; Connecting power supplies backwards to an AC power source; Products used in an inappropriate location or in environmental conditions (temperature, humidity, moisture, etc.) outside the normal specified range; Water damage to products not specifically sold as waterproof products; Electrical power surges and spikes; Damage from hail, flooding, tornado, fire, wind, earthquake, lightning, electrical storm, or any other natural disasters or "force majeure" incidences; Damage caused by a vehicle or other accident; Damage caused when transporting the item; Damage to any products that were modified by the user, used for purposes other than as intended or directed, or connected to LED systems or components not purchased from Flexfire LEDs; Products that have been subjected to misuse, mishandling, misapplication or accident. Products used in connection with any components, devices or systems other than those explicitly approved as compatible with Company's products and listed on Company's website. Excessive wear and tear and/or physical or accidental abuse, loss, or theft. Improper repairs or warranty services performed by someone other than Flexfire LEDs will void this warranty.



Contact Information



Toll Free Number:
1-844-353-9347



Local Number:
(925) 273-9080



info@flexfireleds.com



FLEXFIRELEDs

www.flexfireleds.com