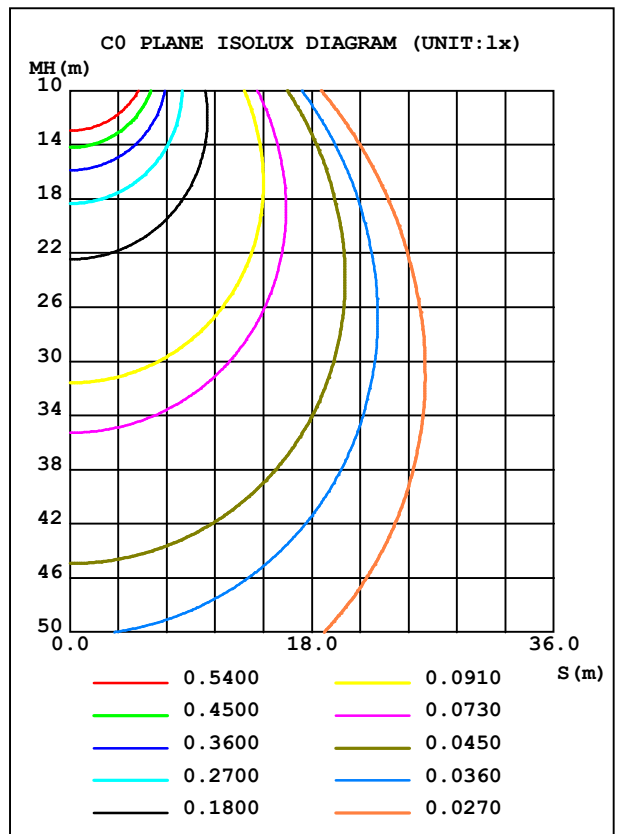
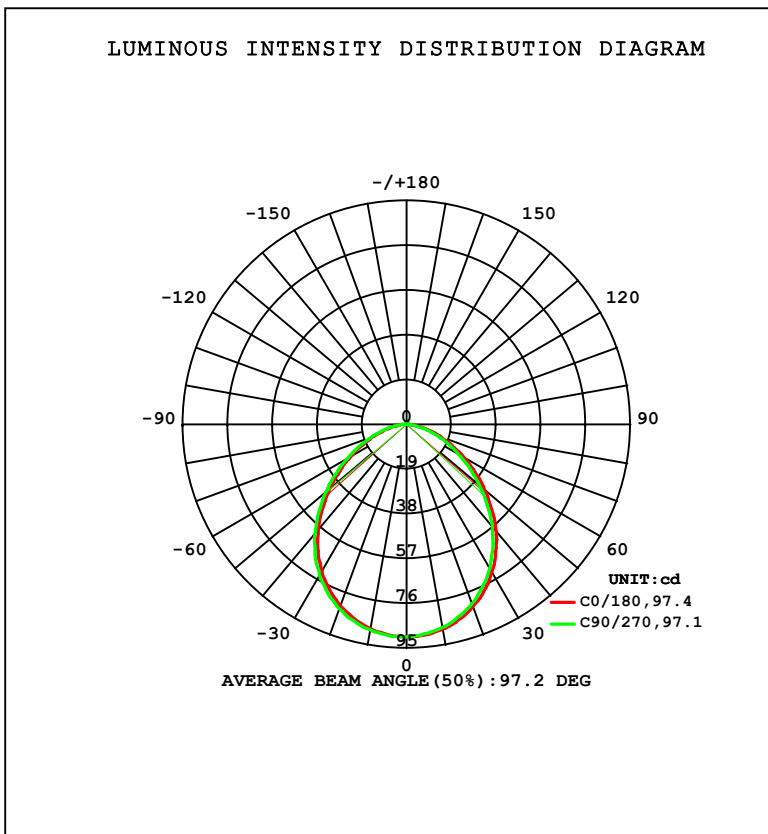


LUMINAIRE PHOTOMETRIC TEST REPORT

NAME: VIC-R-30K	TYPE: LED Fixture	WEIGHT:
SPEC.: 3.2W	DIM.: 63.5*12.7(MM)	SERIAL No.: 001
MFR.: Flexfire LEDs, Inc.	SUR.:	Shielding Angle: 120

DATA OF LAMP		PHOTOMETRIC DATA				Eff: 70.97 lm/W
MODEL		I _{max} (cd)	90.22	S/MH (C0/180)		1.19
NOMINAL POWER (W)	3.02825	LOR (%)	100.0	S/MH (C90/270)		1.22
RATED VOLTAGE (V)	12.113	TOTAL FLUX (lm)	214.92	η UP, DN (C0-180)		0.6, 48.4
NOMINAL FLUX (lm)	214.915	CIE CLASS	DIRECT	η UP, DN (C180-360)		0.5, 50.5
LAMPS INSIDE	1	η up (%)	1.1	CIBSE SHR NOM		1.25
TEST VOLTAGE (V)	12.113	η down (%)	98.9	CIBSE SHR MAX		1.35



C Range: 0 - 360DEG
 C Interval: 22.5DEG
 Test Speed: HIGH
 Temperature: 25.3DEG
 Test Date: 2022-08-04

γ Range: 0 - 180DEG
 γ Interval: 1.0DEG
 Test System: EVERFINE GO-2000B_V1 SYSTEM V2.00.454
 Humidity: 65.0%
 Test Distance: 6.392m [K=1.0000]
 Remarks:

ZONAL FLUX DIAGRAM

ZONAL FLUX DIAGRAM:

γ	C0	C45	C90	C135	C180	C225	C270	C315	γ	Φ zone	Φ total	%lum, lamp
10	88.36	87.93	87.59	87.64	88.13	88.51	88.74	88.76	0- 10	8.514	8.514	3.96,3.96
20	82.48	81.67	81.10	81.18	82.17	82.96	83.36	83.29	10- 20	24.16	32.68	15.2,15.2
30	72.62	71.57	70.72	70.77	72.16	73.26	73.97	73.96	20- 30	35.79	68.47	31.9,31.9
40	59.17	57.76	56.64	56.84	58.39	59.65	60.67	60.62	30- 40	41.16	109.6	51,51
50	43.53	41.92	40.72	41.12	42.59	43.83	44.78	45.00	40- 50	39.25	148.9	69.3,69.3
60	28.20	26.61	25.62	26.07	27.37	28.23	29.12	29.42	50- 60	31.36	180.2	83.9,83.9
70	15.06	13.79	13.20	13.58	14.62	15.26	15.90	16.18	60- 70	20.66	200.9	93.5,93.5
80	4.984	4.167	3.805	4.030	4.759	5.250	5.662	5.454	70- 80	10.02	210.9	98.1,98.1
90	0.0819	0.0873	0.0900	0.0902	0.0472	0.0449	0.0426	0.0427	80- 90	1.598	212.5	98.9,98.9
100	0.1512	0.1570	0.1724	0.1652	0.1241	0.1148	0.1152	0.1153	90-100	0.1074	212.6	98.9,98.9
110	0.2602	0.2667	0.2875	0.2779	0.2382	0.2146	0.2202	0.2130	100-110	0.2014	212.8	99,99
120	0.4015	0.3840	0.4125	0.4006	0.3746	0.3368	0.3428	0.3307	110-120	0.3023	213.1	99.2,99.2
130	0.5528	0.5137	0.5126	0.5359	0.5259	0.4591	0.4503	0.4460	120-130	0.3888	213.5	99.3,99.3
140	0.6546	0.6384	0.6327	0.6512	0.6101	0.5962	0.5529	0.5862	130-140	0.4270	213.9	99.5,99.5
150	0.7364	0.6834	0.7253	0.6938	0.6844	0.6460	0.6853	0.6336	140-150	0.4084	214.3	99.7,99.7
160	0.7291	0.6559	0.6729	0.6763	0.7017	0.6635	0.6427	0.6438	150-160	0.3137	214.7	99.9,99.9
170	0.6819	0.6609	0.6377	0.6737	0.6918	0.6709	0.6478	0.6738	160-170	0.1881	214.8	100,100
180	0.7340	0.7283	0.7353	0.7414	0.7266	0.7208	0.7328	0.7314	170-180	0.0659	214.9	100,100
DEG	LUMINOUS INTENSITY:cd									UNIT:lm		

Conical surface Flux(90deg): 129.93 lm

%lum = 60.5%

%lamp = 60.5%

Conical surface Flux(120deg): 180.24 lm

%lum = 83.9%

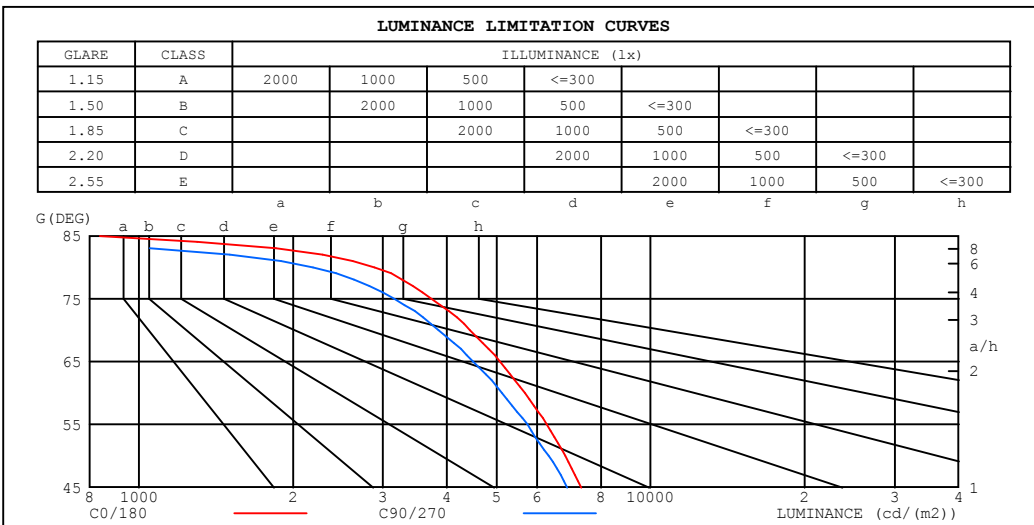
%lamp = 83.9%

C Range: 0 - 360DEG
 C Interval: 22.5DEG
 Test Speed: HIGH
 Temperature:25.3DEG
 Test Date:2022-08-04

γ Range: 0 - 180DEG
 γ Interval: 1.0DEG
 Test System:EVERFINE GO-2000B_V1 SYSTEM V2.00.454
 Humidity:65.0%
 Test Distance:6.392m [K=1.0000]
 Remarks:

LUMINANCE LIMITATION CURVES

NAME: VIC-R-30K	TYPE: LED Fixture	WEIGHT:
SPEC.: 3.2W	DIM.: 63.5*12.7(MM)	SERIAL No.: 001
MFR.: Flexfire LEDs, Inc.	SUR.:	Shielding Angle: 120



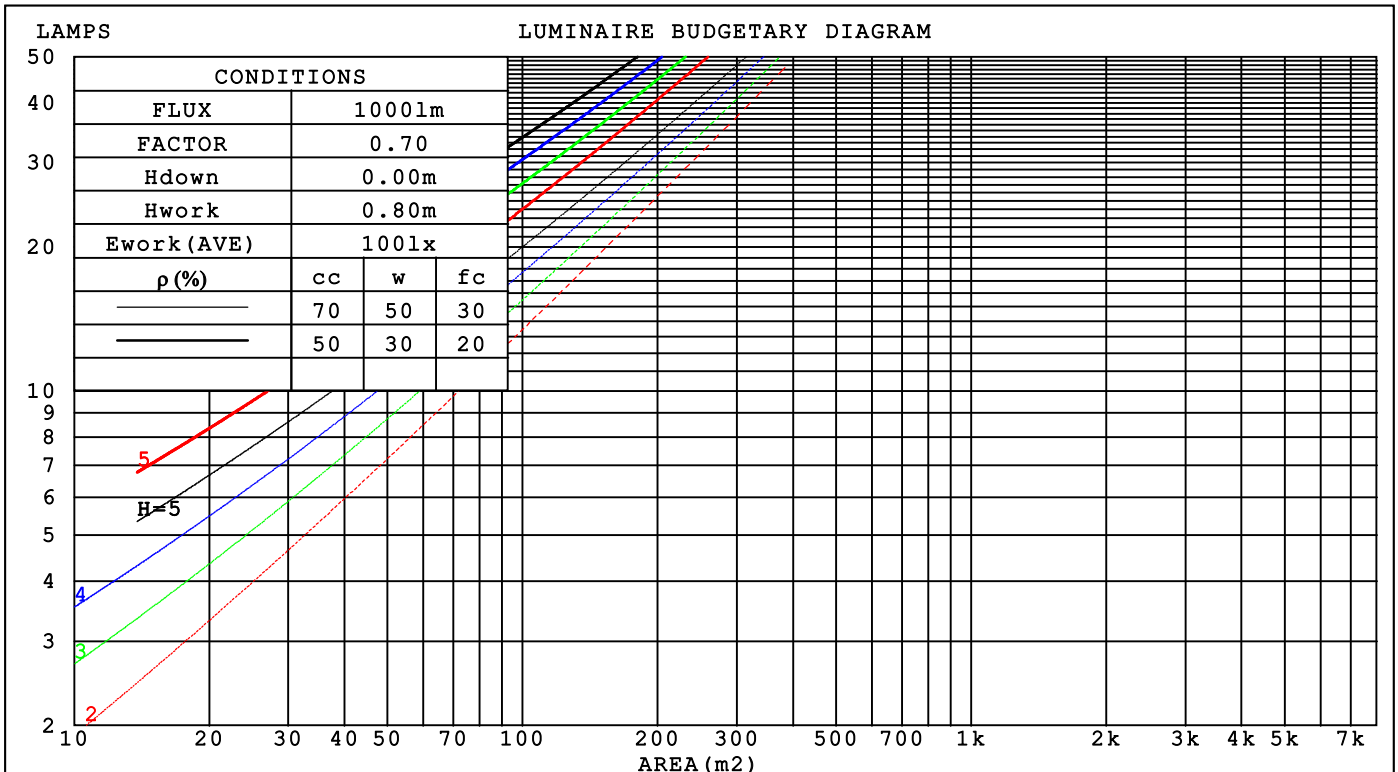
C Range: 0 - 360DEG
 C Interval: 22.5DEG
 Test Speed: HIGH
 Temperature: 25.3DEG
 Test Date: 2022-08-04

γ Range: 0 - 180DEG
 γ Interval: 1.0DEG
 Test System: EVERFINE GO-2000B_V1 SYSTEM V2.00.454
 Humidity: 65.0%
 Test Distance: 6.392m [K=1.0000]
 Remarks:

CU AND LUMINAIRE BUDGETARY ESTIMATE DIAGRAM

NAME: VIC-R-30K	TYPE: LED Fixture	WEIGHT:
SPEC.: 3.2W	DIM.: 63.5*12.7(MM)	SERIAL No.: 001
MFR.: Flexfire LEDs, Inc.	SUR.:	Shielding Angle: 120

pcc	80%			70%			50%			30%			10%			0
pw	50%	30%	10%	50%	30%	10%	50%	30%	10%	50%	30%	10%	50%	30%	10%	0
pfc	20%			20%			20%			20%			20%			0
RCR	RCR:Room Cavity Ratio															
	Coefficients of Utilization(CU)															
0.0	1.19	1.19	1.19	1.16	1.16	1.16	1.10	1.10	1.10	1.06	1.06	1.06	1.01	1.01	1.01	.99
1.0	1.05	1.02	.98	1.03	.90	.96	.99	.96	.93	.95	.92	.90	.91	.89	.87	.85
2.0	.93	.87	.81	.91	.85	.80	.87	.83	.78	.84	.80	.76	.81	.78	.75	.72
3.0	.82	.75	.69	.81	.74	.68	.78	.72	.67	.75	.70	.66	.72	.68	.64	.62
4.0	.74	.65	.59	.72	.65	.59	.70	.63	.58	.67	.61	.57	.65	.60	.56	.54
5.0	.66	.58	.51	.65	.57	.51	.63	.56	.50	.61	.55	.50	.59	.53	.49	.47
6.0	.60	.51	.45	.59	.51	.45	.57	.50	.44	.55	.49	.44	.54	.48	.44	.42
7.0	.54	.46	.40	.54	.46	.40	.52	.45	.40	.50	.44	.39	.49	.43	.39	.37
8.0	.50	.42	.36	.49	.41	.36	.48	.41	.36	.46	.40	.35	.45	.39	.35	.33
9.0	.46	.38	.33	.45	.38	.32	.44	.37	.32	.43	.37	.32	.42	.36	.32	.30
10.0	.42	.35	.30	.42	.35	.30	.41	.34	.29	.40	.34	.29	.39	.33	.29	.27



C Range: 0 - 360DEG
 C Interval: 22.5DEG
 Test Speed: HIGH
 Temperature: 25.3DEG
 Test Date: 2022-08-04

γ Range: 0 - 180DEG
 γ Interval: 1.0DEG
 Test System: EVERFINE GO-2000B_V1 SYSTEM V2.00.454
 Humidity: 65.0%
 Test Distance: 6.392m [K=1.0000]
 Remarks:

WEC AND CCEC

NAME: VIC-R-30K	TYPE: LED Fixture	WEIGHT:
SPEC.: 3.2W	DIM.: 63.5*12.7(MM)	SERIAL No.: 001
MFR.: Flexfire LEDs, Inc.	SUR.:	Shielding Angle: 120

ρ_{cc}	80%			70%			50%			30%			10%			0
ρ_w	50%	30%	10%	50%	30%	10%	50%	30%	10%	50%	30%	10%	50%	30%	10%	0
ρ_{fc}	20%			20%			20%			20%			20%			0
RCR	RCR:Room Cavity Ratio						Wall Exitance Coefficients(WEC)									
0.0																
1.0	.276	.157	.050	.269	.153	.049	.255	.146	.047	.242	.140	.045	.231	.134	.043	
2.0	.265	.145	.045	.259	.142	.044	.247	.137	.043	.236	.132	.041	.225	.127	.040	
3.0	.249	.132	.040	.243	.130	.039	.232	.126	.038	.223	.122	.037	.213	.118	.037	
4.0	.232	.121	.035	.227	.119	.035	.218	.115	.034	.209	.112	.034	.201	.109	.033	
5.0	.216	.110	.032	.212	.109	.032	.203	.106	.031	.196	.103	.031	.188	.101	.030	
6.0	.202	.101	.029	.198	.100	.029	.190	.098	.028	.183	.095	.028	.177	.093	.028	
7.0	.189	.093	.026	.185	.092	.026	.179	.090	.026	.172	.088	.026	.167	.087	.025	
8.0	.177	.087	.024	.174	.086	.024	.168	.084	.024	.162	.082	.024	.157	.081	.024	
9.0	.167	.081	.023	.164	.080	.022	.159	.078	.022	.153	.077	.022	.149	.075	.022	
10.0	.157	.076	.021	.155	.075	.021	.150	.073	.021	.145	.072	.021	.141	.071	.020	

ρ_{cc}	80%			70%			50%			30%			10%			0
ρ_w	50%	30%	10%	50%	30%	10%	50%	30%	10%	50%	30%	10%	50%	30%	10%	0
ρ_{fc}	20%			20%			20%			20%			20%			0
RCR	RCR:Room Cavity Ratio						Ceiling Cavity Exitance Coefficients(CCEC)									
0.0																
1.0	.199	.199	.199	.170	.170	.170	.116	.116	.116	.067	.067	.067	.021	.021	.021	
2.0	.187	.165	.146	.160	.142	.125	.109	.097	.087	.063	.056	.050	.020	.018	.016	
3.0	.177	.141	.110	.152	.121	.095	.104	.084	.066	.060	.049	.039	.019	.016	.013	
4.0	.169	.123	.086	.145	.106	.075	.100	.074	.052	.057	.043	.031	.018	.014	.010	
5.0	.161	.109	.070	.138	.094	.060	.095	.066	.043	.055	.039	.025	.018	.013	.008	
6.0	.154	.099	.058	.132	.085	.050	.091	.060	.036	.053	.035	.021	.017	.011	.007	
7.0	.147	.090	.050	.126	.078	.043	.087	.055	.031	.051	.032	.018	.016	.011	.006	
8.0	.141	.083	.043	.121	.072	.038	.084	.051	.027	.049	.030	.016	.016	.010	.005	
9.0	.134	.078	.039	.116	.067	.034	.080	.047	.024	.047	.028	.014	.015	.009	.005	
10.0	.129	.073	.035	.111	.063	.030	.077	.044	.022	.045	.026	.013	.014	.009	.004	
10.0	.123	.068	.032	.106	.059	.028	.074	.042	.020	.043	.025	.012	.014	.008	.004	

C Range: 0 - 360DEG
 C Interval: 22.5DEG
 Test Speed: HIGH
 Temperature:25.3DEG
 Test Date:2022-08-04

γ Range: 0 - 180DEG
 γ Interval: 1.0DEG
 Test System:EVERFINE GO-2000B_V1 SYSTEM V2.00.454
 Humidity:65.0%
 Test Distance:6.392m [K=1.0000]
 Remarks:

UGR(Unified Glare Rating) Table

NAME: VIC-R-30K		TYPE: LED Fixture					WEIGHT:					
SPEC.: 3.2W		DIM.: 63.5*12.7(MM)					SERIAL No.: 001					
MFR.: Flexfire LEDs, Inc.		SUR.:					Shielding Angle: 120					
ceiling/cavity		0.7	0.7	0.5	0.5	0.3	0.7	0.7	0.5	0.5	0.3	
walls		0.5	0.3	0.5	0.3	0.3	0.5	0.3	0.5	0.3	0.3	
working plane		0.2	0.2	0.2	0.2	0.2	0.2	0.2	0.2	0.2	0.2	
Room dimensions		Viewed crosswise					Viewed endwise					
x = 2H y = 2H		18.8	20.3	19.1	20.5	20.7	18.5	19.9	18.8	20.1	20.4	
	3H	19.9	21.2	20.2	21.5	21.7	19.5	20.8	19.8	21.0	21.3	
	4H	20.3	21.5	20.6	21.8	22.0	19.8	21.0	20.1	21.3	21.5	
	6H	20.5	21.6	20.8	21.9	22.2	19.9	21.1	20.3	21.4	21.7	
	8H	20.5	21.6	20.8	21.9	22.2	19.9	21.0	20.3	21.3	21.6	
	12H	20.5	21.5	20.8	21.8	22.2	19.9	20.9	20.2	21.2	21.6	
	4H	2H	19.2	20.5	19.6	20.7	21.0	19.0	20.2	19.3	20.5	20.7
		3H	20.5	21.5	20.8	21.8	22.2	20.1	21.2	20.4	21.5	21.8
		4H	20.9	21.9	21.3	22.2	22.6	20.5	21.5	20.9	21.8	22.2
		6H	21.2	22.1	21.6	22.5	22.8	20.7	21.6	21.1	21.9	22.3
		8H	21.3	22.1	21.7	22.5	22.9	20.7	21.5	21.1	21.9	22.3
		12H	21.2	22.0	21.7	22.4	22.8	20.7	21.4	21.1	21.8	22.2
	8H	4H	21.0	21.8	21.5	22.2	22.6	20.6	21.4	21.0	21.8	22.2
		6H	21.4	22.1	21.9	22.5	22.9	20.9	21.6	21.4	22.0	22.5
		8H	21.5	22.1	22.0	22.5	23.0	21.0	21.5	21.4	22.0	22.5
		12H	21.5	22.0	22.0	22.4	22.9	20.9	21.4	21.4	21.9	22.4
	12H	4H	21.0	21.7	21.4	22.1	22.6	20.6	21.3	21.0	21.7	22.2
		6H	21.4	22.0	21.9	22.4	22.9	20.9	21.5	21.4	21.9	22.4
		8H	21.5	22.0	22.0	22.5	23.0	21.0	21.5	21.5	21.9	22.4
Variations with the observer position at spacings(CIE Pub.117):												
S = 1.0H		+ 0.3 / - 0.3					+ 0.3 / - 0.4					
	1.5H	+ 0.1 / - 0.3					+ 0.1 / - 0.4					
	2.0H	+ 0.5 / - 0.5					+ 0.5 / - 0.6					

CIE Pub.117, 214.9 lm Total Lamp Luminous Flux Corrected (8log(F/F0) = -5.3)
 Area: 0.01 m2

C Range: 0 - 360DEG
 C Interval: 22.5DEG
 Test Speed: HIGH
 Temperature:25.3DEG
 Test Date:2022-08-04

γ Range: 0 - 180DEG
 γ Interval: 1.0DEG
 Test System:EVERFINE GO-2000B_V1 SYSTEM V2.00.454
 Humidity:65.0%
 Test Distance:6.392m [K=1.0000]
 Remarks:

UTILIZATION FACTORS TABLE

NAME: VIC-R-30K	TYPE: LED Fixture	WEIGHT:
SPEC.: 3.2W	DIM.: 63.5*12.7(MM)	SERIAL No.: 001
MFR.: Flexfire LEDs, Inc.	SUR.:	Shielding Angle: 120

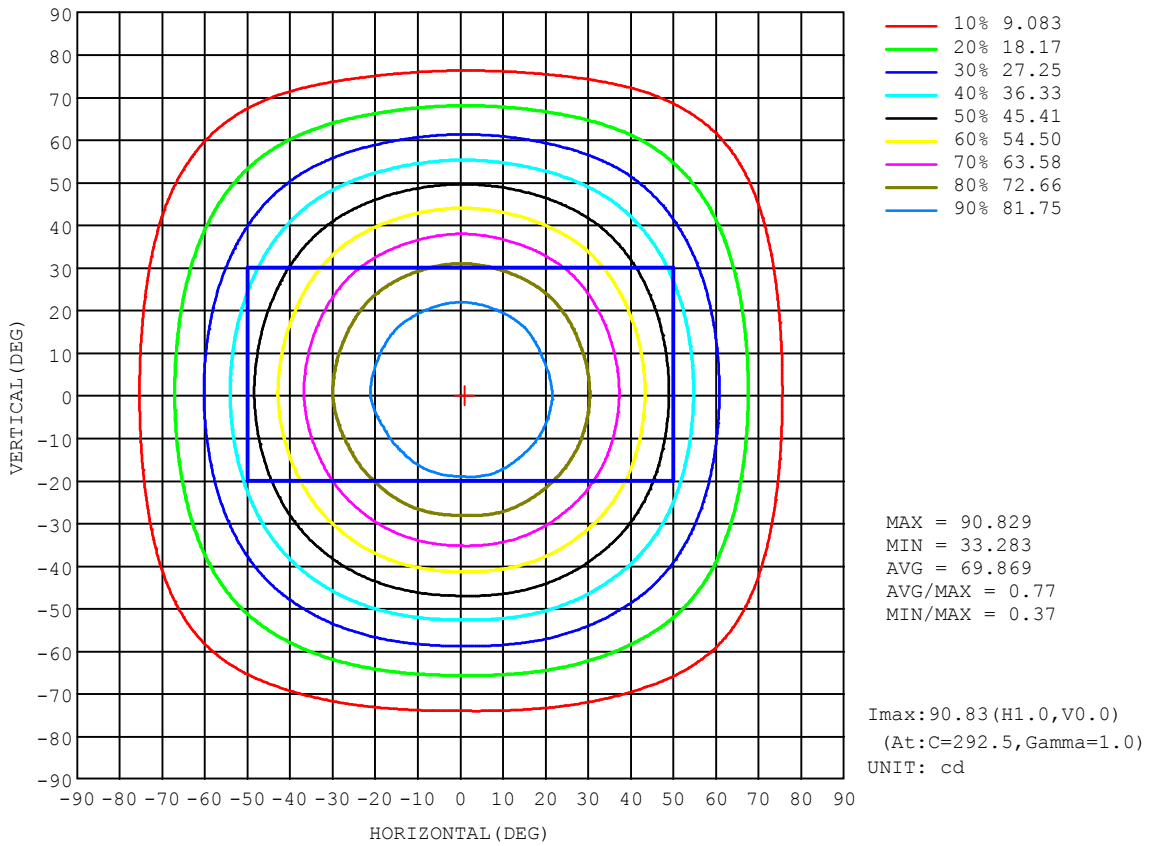
REFLECTANCE										
Ceiling	0.8	0.8	0.8	0.7	0.7	0.7	0.5	0.5	0.5	0
Walls	0.7	0.5	0.3	0.7	0.5	0.3	0.7	0.5	0.3	0
Working plane	0.2	0.2	0.2	0.2	0.2	0.2	0.2	0.2	0.2	0
ROOM INDEX	UTILIZATION FACTORS (PERCENT) k (RI) x RCR = 5									
k = 0.60	60	48	42	59	48	42	58	48	41	35
0.80	69	58	51	68	58	51	66	57	50	44
1.00	77	66	59	76	66	59	73	67	58	51
1.25	84	74	67	82	73	66	80	72	66	58
1.50	89	80	73	87	79	72	84	77	71	64
2.00	96	88	82	94	87	81	91	85	80	72
2.50	100	93	87	98	91	86	94	89	84	76
3.00	103	97	91	101	95	90	97	92	88	79
4.00	107	101	97	104	100	96	100	96	93	84
5.00	109	105	101	107	103	99	102	99	96	86
ROOM INDEX	UF (total)									Direct
According to DIN EN 13032-2 2004			Suspended					SHRNOM = 1.00		

C Range: 0 - 360DEG
 C Interval: 22.5DEG
 Test Speed: HIGH
 Temperature: 25.3DEG
 Test Date: 2022-08-04

γ Range: 0 - 180DEG
 γ Interval: 1.0DEG
 Test System: EVERFINE GO-2000B_V1 SYSTEM V2.00.454
 Humidity: 65.0%
 Test Distance: 6.392m [K=1.0000]
 Remarks:

ISOCANDELA DIAGRAM

NAME: VIC-R-30K	TYPE: LED Fixture	WEIGHT:
SPEC.: 3.2W	DIM.: 63.5*12.7(MM)	SERIAL No.: 001
MFR.: Flexfire LEDs, Inc.	SUR.:	Shielding Angle: 120

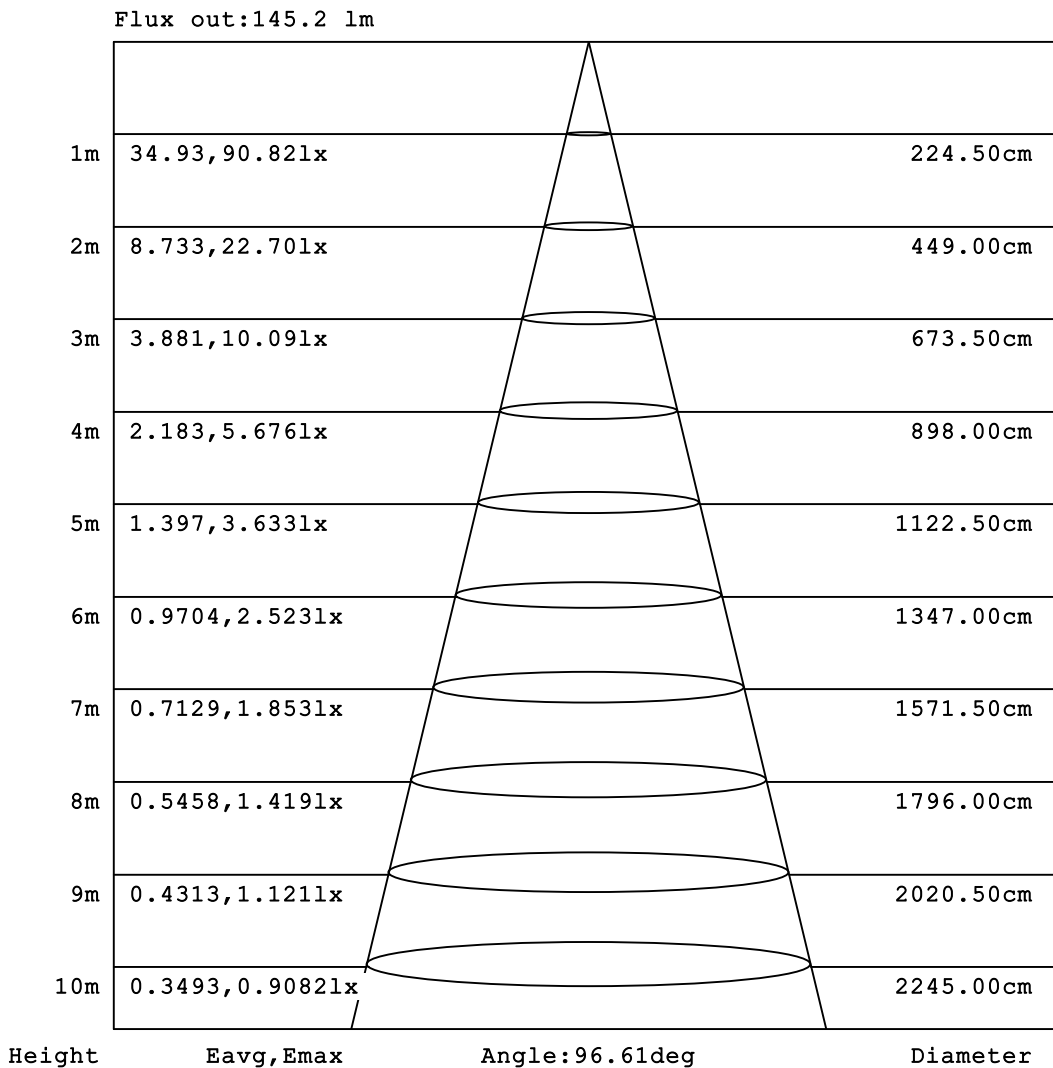


C Range: 0 - 360DEG
 C Interval: 22.5DEG
 Test Speed: HIGH
 Temperature: 25.3DEG
 Test Date: 2022-08-04

γ Range: 0 - 180DEG
 γ Interval: 1.0DEG
 Test System: EVERFINE GO-2000B_V1 SYSTEM V2.00.454
 Humidity: 65.0%
 Test Distance: 6.392m [K=1.0000]
 Remarks:

AAI Figure

NAME: VIC-R-30K	TYPE: LED Fixture	WEIGHT:
SPEC.: 3.2W	DIM.: 63.5*12.7(MM)	SERIAL No.: 001
MFR.: Flexfire LEDs, Inc.	SUR.:	Shielding Angle: 120



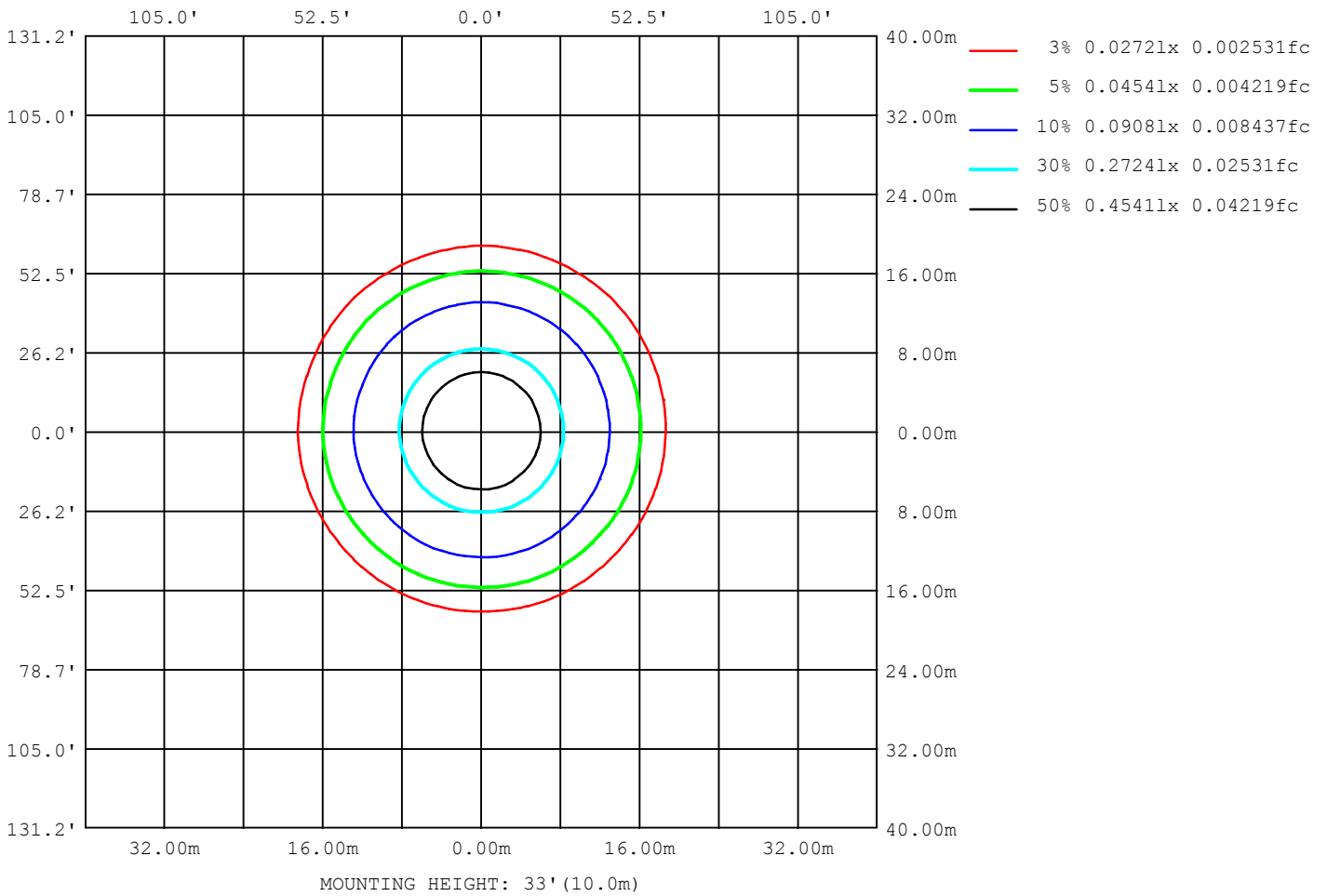
Note: The Curves indicate the illuminated area and the average illumination when the luminaire is at different distance.

C Range: 0 - 360DEG
 C Interval: 22.5DEG
 Test Speed: HIGH
 Temperature: 25.3DEG
 Test Date: 2022-08-04

γ Range: 0 - 180DEG
 γ Interval: 1.0DEG
 Test System: EVERFINE GO-2000B_V1 SYSTEM V2.00.454
 Humidity: 65.0%
 Test Distance: 6.392m [K=1.0000]
 Remarks:

ISOLUX DIAGRAM

NAME: VIC-R-30K	TYPE: LED Fixture	WEIGHT:
SPEC.: 3.2W	DIM.: 63.5*12.7(MM)	SERIAL No.: 001
MFR.: Flexfire LEDs, Inc.	SUR.:	Shielding Angle: 120



C Range: 0 - 360DEG
 C Interval: 22.5DEG
 Test Speed: HIGH
 Temperature: 25.3DEG
 Test Date: 2022-08-04

γ Range: 0 - 180DEG
 γ Interval: 1.0DEG
 Test System: EVERFINE GO-2000B_V1 SYSTEM V2.00.454
 Humidity: 65.0%
 Test Distance: 6.392m [K=1.0000]
 Remarks:

LED Avg.L Report

NAME: VIC-R-30K	TYPE: LED Fixture	WEIGHT:
SPEC.: 3.2W	DIM.: 63.5*12.7(MM)	SERIAL No.: 001
MFR.: Flexfire LEDs, Inc.	SUR.:	Shielding Angle: 120

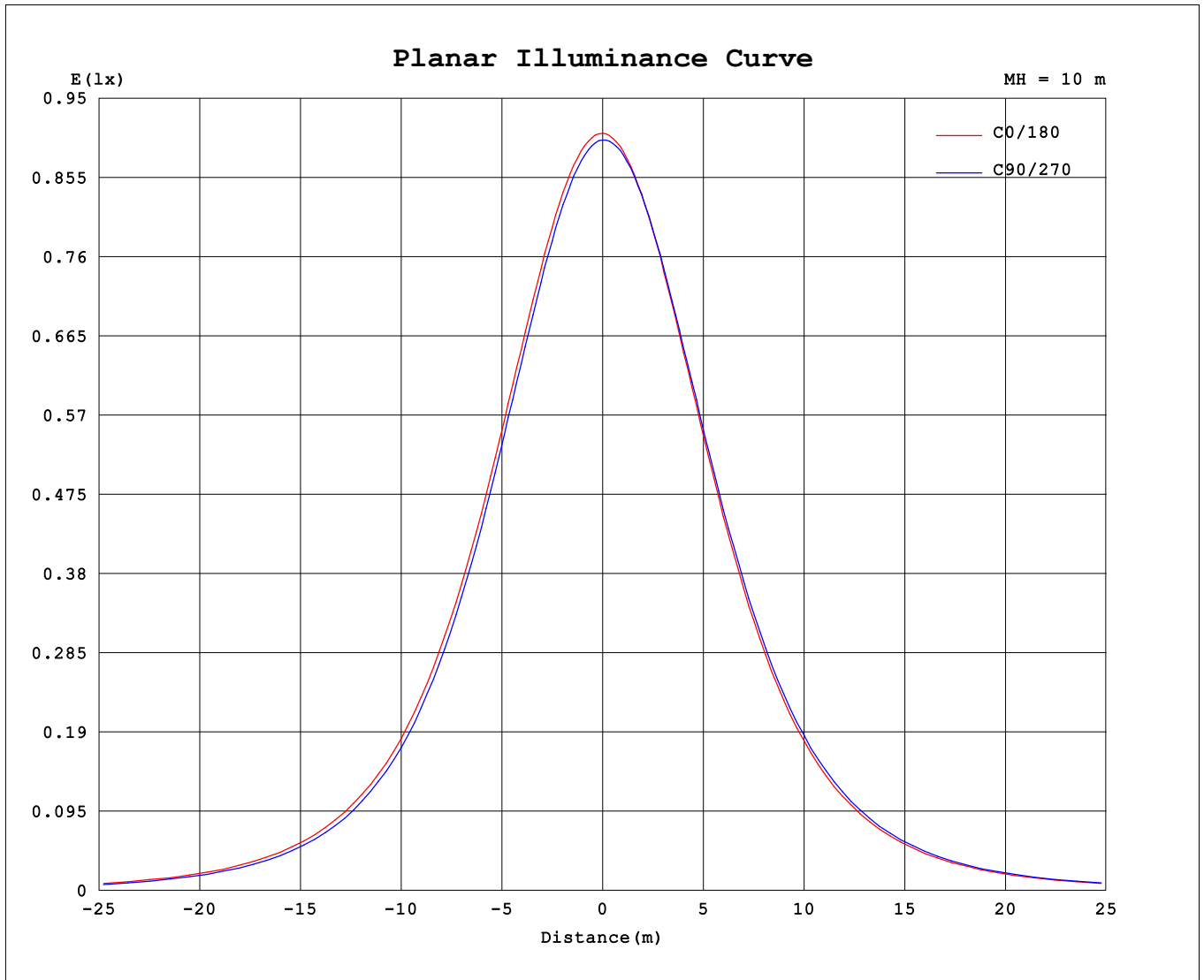
AvgL	cd/m2
L 0~180 (65) av	4965
L 0~180 (75) av	3658
L 0~180 (85) av	791
L 90~270 (65) av	4883
L 90~270 (75) av	3584
L 90~270 (85) av	1054
L 45 (65) av	4924
L 45 (75) av	3630
L 45 (85) av	951

Standard: GB/T 29293-2012

C Range: 0 - 360DEG
 C Interval: 22.5DEG
 Test Speed: HIGH
 Temperature:25.3DEG
 Test Date:2022-08-04

γ Range: 0 - 180DEG
 γ Interval: 1.0DEG
 Test System:EVERFINE GO-2000B_V1 SYSTEM V2.00.454
 Humidity:65.0%
 Test Distance:6.392m [K=1.0000]
 Remarks:

Planar Illuminance Curve



C Range: 0 - 360DEG
 C Interval: 22.5DEG
 Test Speed: HIGH
 Temperature: 25.3DEG
 Test Date: 2022-08-04

γ Range: 0 - 180DEG
 γ Interval: 1.0DEG
 Test System: EVERFINE GO-2000B_V1 SYSTEM V2.00.454
 Humidity: 65.0%
 Test Distance: 6.392m [K=1.0000]
 Remarks:

LUMINOUS DISTRIBUTION INTENSITY DATA

NAME: VIC-R-30K	TYPE: LED Fixture	WEIGHT:
SPEC.: 3.2W	DIM.: 63.5*12.7(MM)	SERIAL No.: 001
MFR.: Flexfire LEDs, Inc.	SUR.:	Shielding Angle: 120

Table--1

UNIT: cd

C (DEG) \ γ (DEG)	0	22.5	45	67.5	90	112.5	135	157.5	180	202.5	225	247.5	270	292.5	315	337.5			
0	90.2	90.2	90.2	90.2	90.2	90.2	90.2	90.2	90.2	90.2	90.2	90.2	90.2	90.2	90.2	90.2			
5	89.7	89.7	89.6	89.5	89.4	89.4	89.4	89.5	89.6	89.7	89.8	89.9	89.9	89.9	90.0	89.9			
10	88.4	88.2	87.9	87.9	87.6	87.7	87.6	87.9	88.1	88.2	88.5	88.6	88.7	88.7	88.8	88.6			
15	85.9	85.7	85.3	85.2	84.8	85.0	84.9	85.2	85.6	85.8	86.2	86.2	86.5	86.5	86.6	86.3			
20	82.5	82.2	81.7	81.6	81.1	81.3	81.2	81.6	82.2	82.3	83.0	82.9	83.4	83.2	83.3	83.0			
25	78.1	77.7	77.1	77.0	76.4	76.4	76.5	77.0	77.6	77.8	78.6	78.6	79.2	79.0	79.1	78.6			
30	72.6	72.3	71.6	71.4	70.7	70.8	70.8	71.4	72.2	72.4	73.3	73.4	74.0	73.7	74.0	73.3			
35	66.2	65.9	65.0	64.8	64.1	64.2	64.1	64.9	65.7	66.0	66.9	67.2	67.8	67.5	67.7	67.0			
40	59.2	58.8	57.8	57.6	56.6	57.0	56.8	57.6	58.4	58.7	59.6	60.0	60.7	60.4	60.6	60.0			
45	51.4	51.0	50.0	49.7	48.7	49.1	49.1	49.8	50.5	50.9	51.8	52.2	52.9	52.8	53.0	52.3			
50	43.5	42.9	41.9	41.6	40.7	41.1	41.1	41.8	42.6	42.8	43.8	44.2	44.8	44.7	45.0	44.3			
55	35.7	35.1	34.0	33.8	33.0	33.2	33.4	34.1	34.7	35.0	35.8	36.1	36.8	36.7	37.0	36.5			
60	28.2	27.6	26.6	26.4	25.6	25.9	26.1	26.7	27.4	27.6	28.2	28.5	29.1	29.1	29.4	28.9			
65	21.3	20.7	19.8	19.7	19.1	19.3	19.5	20.1	20.6	20.6	21.4	21.5	22.2	22.1	22.4	21.8			
70	15.1	14.6	13.8	13.7	13.2	13.5	13.6	14.2	14.6	14.5	15.3	15.3	15.9	15.9	16.2	15.7			
75	9.59	9.28	8.64	8.54	8.18	8.40	8.46	9.00	9.35	9.29	9.88	9.94	10.4	10.4	10.6	10.2			
80	4.98	4.79	4.17	4.10	3.81	3.98	4.03	4.50	4.76	4.79	5.25	5.28	5.66	5.62	5.45	5.41			
85	0.73	0.72	0.53	0.52	0.46	0.48	0.47	0.57	0.65	0.73	1.02	1.07	1.38	1.30	1.29	0.96			
90	0.08	0.09	0.09	0.09	0.09	0.10	0.09	0.10	0.05	0.05	0.04	0.05	0.04	0.05	0.04	0.04			
95	0.11	0.12	0.11	0.13	0.12	0.14	0.12	0.13	0.08	0.07	0.07	0.07	0.07	0.01	0.08	0.07			
100	0.15	0.16	0.16	0.17	0.17	0.18	0.17	0.17	0.12	0.11	0.11	0.11	0.12	0.10	0.12	0.10			
105	0.20	0.21	0.21	0.23	0.23	0.24	0.22	0.22	0.18	0.16	0.16	0.16	0.17	0.15	0.16	0.15			
110	0.26	0.27	0.27	0.28	0.29	0.29	0.28	0.28	0.24	0.22	0.21	0.21	0.22	0.21	0.21	0.20			
115	0.33	0.33	0.32	0.34	0.34	0.35	0.34	0.35	0.31	0.27	0.27	0.20	0.28	0.26	0.27	0.26			
120	0.40	0.40	0.38	0.41	0.41	0.42	0.40	0.42	0.37	0.34	0.34	0.32	0.34	0.32	0.33	0.32			
125	0.48	0.48	0.45	0.47	0.47	0.48	0.47	0.49	0.45	0.41	0.40	0.38	0.40	0.38	0.39	0.39			
130	0.55	0.55	0.51	0.51	0.51	0.52	0.54	0.56	0.53	0.47	0.46	0.43	0.45	0.42	0.45	0.46			
135	0.61	0.60	0.59	0.57	0.57	0.59	0.60	0.62	0.59	0.51	0.53	0.49	0.49	0.48	0.51	0.51			
140	0.65	0.65	0.64	0.63	0.63	0.64	0.65	0.66	0.61	0.55	0.60	0.56	0.55	0.55	0.59	0.55			
145	0.70	0.69	0.67	0.68	0.69	0.70	0.69	0.70	0.65	0.60	0.64	0.62	0.64	0.60	0.63	0.59			
150	0.74	0.71	0.68	0.69	0.73	0.71	0.69	0.73	0.68	0.64	0.65	0.64	0.69	0.64	0.63	0.64			
155	0.75	0.71	0.67	0.67	0.72	0.69	0.70	0.72	0.70	0.66	0.65	0.64	0.68	0.64	0.62	0.65			
160	0.73	0.69	0.66	0.65	0.67	0.66	0.68	0.71	0.70	0.61	0.66	0.64	0.64	0.64	0.64	0.65			
165	0.69	0.67	0.65	0.65	0.65	0.65	0.67	0.69	0.69	0.67	0.67	0.65	0.64	0.65	0.66	0.65			
170	0.68	0.69	0.66	0.67	0.64	0.67	0.67	0.70	0.69	0.67	0.67	0.67	0.65	0.67	0.67	0.68			
175	0.70	0.70	0.70	0.71	0.69	0.72	0.72	0.72	0.71	0.68	0.70	0.69	0.70	0.69	0.70	0.70			
180	0.73	0.71	0.73	0.74	0.74	0.74	0.74	0.74	0.73	0.71	0.72	0.73	0.73	0.72	0.73	0.73			

C Range: 0 - 360DEG
 C Interval: 22.5DEG
 Test Speed: HIGH
 Temperature: 25.3DEG
 Test Date: 2022-08-04

γ Range: 0 - 180DEG
 γ Interval: 1.0DEG
 Test System: EVERFINE GO-2000B_V1 SYSTEM V2.00.454
 Humidity: 65.0%
 Test Distance: 6.392m [K=1.0000]
 Remarks: